

Open Data Perspectives and Problems: An Archaeological Perspective

Presented in:

Sharing is Caring:

Challenges and Opportunities in Producing Open Data

Lynne Goldstein

Professor of Anthropology

Michigan State University



Archaeology and Big Data



BIG DATA



VOLUME

DATA SIZE

VELOCITY

SPEED OF CHANGE

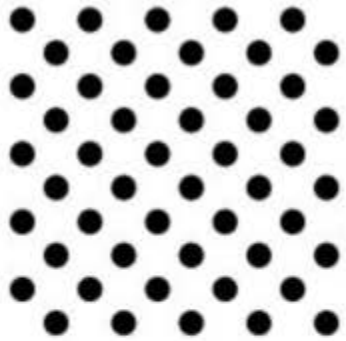
VARIETY

DIFFERENT FORMS
OF DATA SOURCES

VERACITY

UNCERTAINTY OF
DATA

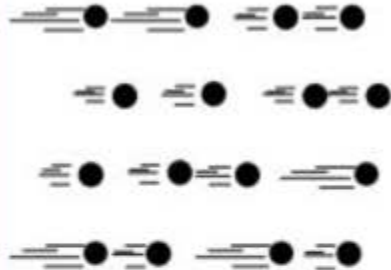
Volume



Data at Rest

Terabytes to exabytes of existing data to process

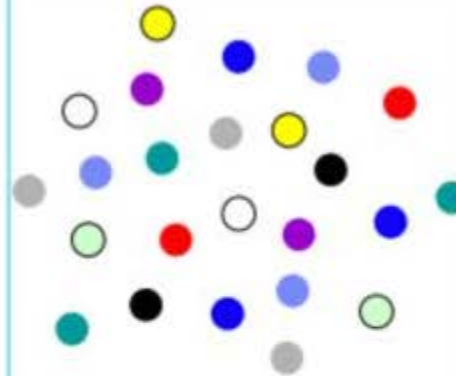
Velocity



Data in Motion

Streaming data, milliseconds to seconds to respond

Variety



Data in Many Forms

Structured, unstructured, text, multimedia

Veracity*



Data in Doubt

Uncertainty due to data inconsistency & incompleteness, ambiguities, latency, deception, model approximations

Volume:

Archaeological data
represent a large volume,
but not when compared to
physics or medicine

Velocity:

Archaeologists do relatively little data streaming, so velocity is not one of our problems

Variety:

In this area, we beat
almost every other
discipline

Veracity:

Another big area for archaeologists because we use “messy” data that is not structured and often not comparable

Legacy Data

- Messy
- Not disciplinarily structured
- Long time depth – data collected 150 years ago can be very significant

Data Sensitivity: A Huge Issue

- Most people unaware that archaeological data are sensitive
- Site files exempt from Freedom of Information Act requests
- Compliance work
- Ownership of data
- Legal issues



Are There Ways to Share or
Open Archaeological Data?

Examples

Preservation
Depositories

Find & share research

As a repository for digital data, tDAR contains a vast amount of resources and tools that can enrich your ongoing research.

- Search our expansive database of documents, data sets, images and more.
- Integrate your data with data from other projects.
- Collaborate with other researchers

[LEARN MORE](#)



Preserve & protect data



The core mission of tDAR is to support better stewardship of the documents and data produced during research.

- Manage all of your archaeological data in one place.
- Organize your resources.
- Download reports or bibliographies.

[LEARN MORE](#)

Extend your classroom

As a discipline-specific archive of archaeological documents, tDAR is dedicated to the teaching of archaeology.

- Use reports, documents, data sets and images in classroom assignments and lectures.
- Find reports and grey literature from investigations from around the world.
- Compare different data sets and analyses.

[LEARN MORE](#)



Meet Your Legal Obligations



Use tDAR to meet legal obligations to preserve and provide access to digital archaeological files, which mandate that data generated by federal agencies must be deposited in a repository capable of:

- Providing long-term digital curation;
- Ensuring preservation of the digital files; and
- Facilitating accessibility to qualified users.

[LEARN MORE](#)

TDAR: The Digital Archaeological Record

EXPLORE

DISCOVER

DEPOSIT

INNOVATE

Supporting research,
learning and teaching
with free, high quality and
dependable digital
resources

Welcome to the new ADS website. There are a number of new features of the website that will make it easier and more enjoyable to use. Please read the 'About' this site section for more details. This site works best with the Firefox, Chrome and Safari browsers. Why not register as a myADS user to take full advantage of the additional features. On registration these personal myADS features become available.

Workbook

Using the tools at the bottom of each page save your favourite resources and regular searches in the myADS Workbook.

History

Your recent exploration of the site and the archives is automatically saved in your myADS History.

Additional services

Registered ADS users can take advantage of a number of additional myADS services, such as tailored email alerts and download of configurable results sets.



Featured collection

Sutton Park LIDAR, air photo, ground & palaeoenvironmental data

August 2015: Cumberland and Westmorland Antiquarian and Archaeological Society Transactions

ADS and the Cumberland and Westmorland Antiquarian and Archaeological Society are pleased to announce the release of the Cumberland and Westmorland Antiquarian and Archaeological Society Transactions. The collection contains all of the Transactions volumes published from 1874 up to 2006, with the years 2007-2014 articles available in Abstract form. The Cumberland and Westmorland Antiquarian and A... more



August 2015: Digital Data Re-use Award 2015

Internet Archaeology and the Archaeology Data Service have teamed up to provide an Award that recognises the outstanding archaeological research being carried out through the re-use of digital data. The Digital Data Re-use Award offers archaeological researchers the chance to promote their work and win the opportunity to publish, free of charge, in the premier open access journal Internet Archaeo... more



July 2015: Internet Archaeology awarded the Directory of Open Access Journals Seal

Internet Archaeology is delighted to announce that they have been awarded the Directory of Open Access Journals (DOAJ) Seal. The DOAJ only award the seal to 'journals that adhere to an exceptionally high level of publishing standards and best practice'.



July 2015: York to head world-leading digital creativity centre

The University of York is to lead an £18 million Digital Creativity (DC) Hub which aims to spark a revolution by harnessing cutting edge research in digital games and interactive media to benefit society. Research will include developing ways to improve engagement with digital archives and digital assets for heritage sites and archaeologists!



ADS:
Archaeology
Data Service,
Great Britain

Examples

Open Data

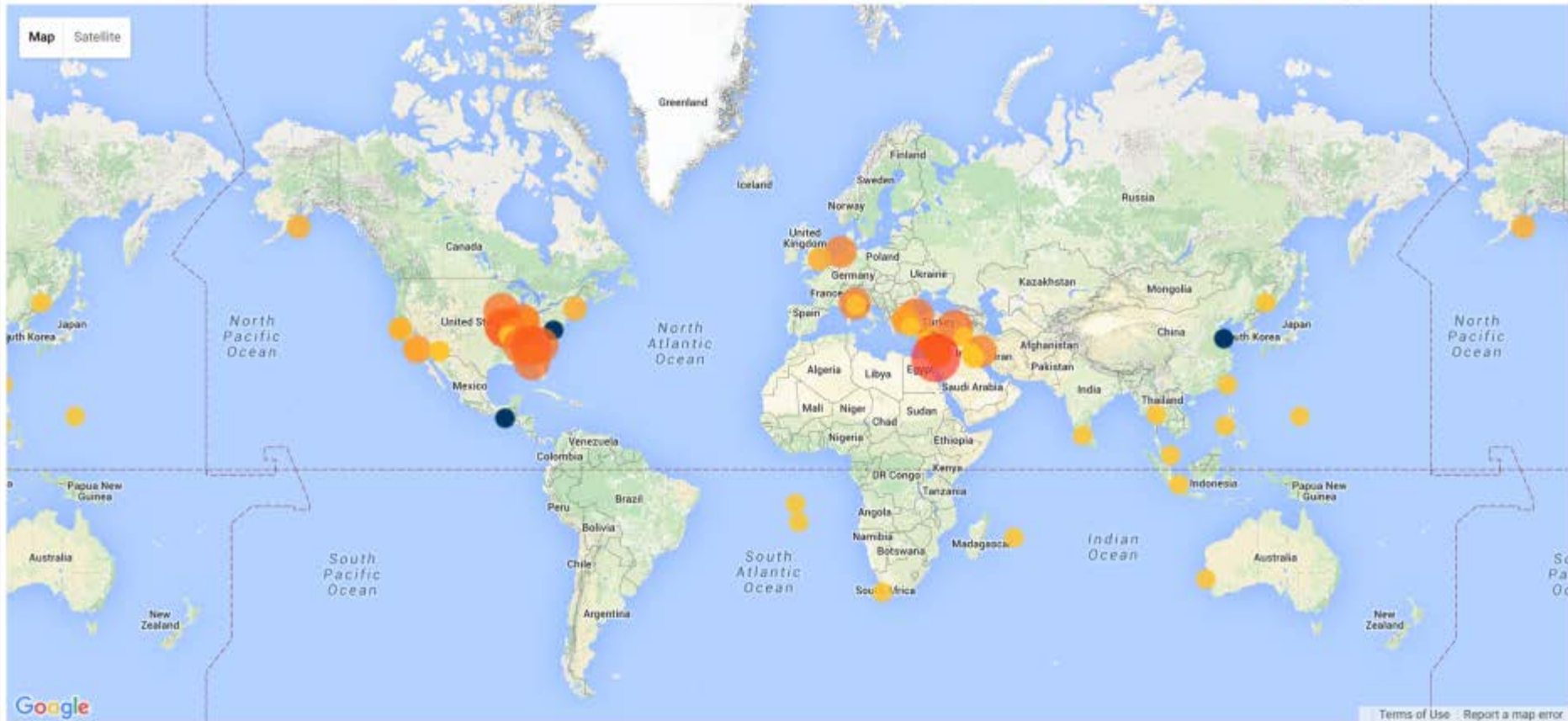
Welcome to Open Context

Open Context reviews, edits, and publishes archaeological research data and archives data with university-backed repositories, including the California Digital Library.

Donate

Make a donation or volunteer services

Content Map and Timeline



Example

DINAA:
Digital Index of North
American Archaeology

Digital Index of North American Archaeology (DINAA)

The Digital Index of North American Archaeology (DINAA) is a multi-institutional undertaking to create interoperability models for archaeological site databases in the eastern United States. The 2-year project, which is funded by the National Science Foundation, commenced September 1, 2012. [View the technical proposal.](#)



This page provides ongoing information about the progress of the project. Visit the links below to learn more about this project. We also broadcast updates to the community via the NASA (National Association of State Archaeologists) listserv. We welcome your questions, comments, and other participation in this project, so please comment on the blog posts or contact us directly by emailing project PIs David Anderson and Josh Wells.

- › [Project Overview](#) (Aug. 6, 2012)
- › [Initial Announcement](#) (Aug. 7, 2012)
- › [Initial Communication with the National Association of State Archaeologists \(NASA\)](#) (Aug. 24, 2012)
- › [Sensitive Data Security Measures and SHPO Collaboration](#) (Aug. 24, 2012)
- › [Data Transfer Instructions](#) (Oct. 31, 2012)
- › [Second Communication with the National Association of State Archaeologists \(NASA\)](#) (Nov. 2, 2012)
- › [DINAA Annual Report](#) (October 2013)
- › [Florida and Georgia Site Files Launch DINAA Project](#) (December 2013)
- › [Program for the DINAA Workshop at the University of Tennessee, Knoxville](#) (March 19-20, 2014)
- › [Explore a draft release of the data](#), updated in August 2014 with Alabama and Virginia site file records

Additional Project News and Updates:

DINAA @ SAA



The DINAA project had a very successful reception at the 79th Annual Society for American Archaeology conference in Austin, TX last month. With several presentations spanning traditional conference papers, posters, and a lightning talk at the Digital Data Interest Group meeting, conference-goers were provided with no shortage of opportunities to learn about multiple aspects of [...]

SUBSCRIBE



About Heritage Bytes



Unless otherwise noted, the Heritage Bytes Weblog by The Alexandria Archive Institute is licensed under a Creative Commons Attribution 3.0 Unported License. Please cite: ux.opencontext.org.

Blogroll

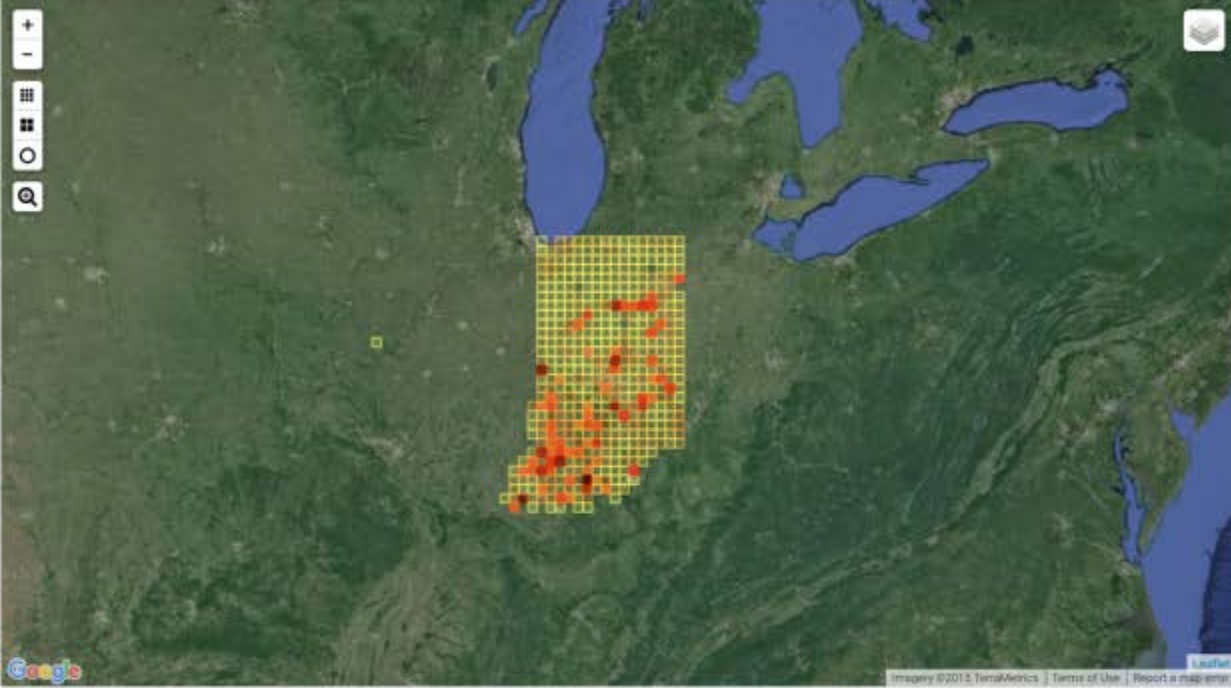
- › [Documentation](#)
- › [Plugins](#)
- › [Suggest Ideas](#)
- › [Support Forum](#)
- › [Themes](#)
- › [WordPress Blog](#)
- › [WordPress Planet](#)

Tags

archaeology
architecture book
collaboration common needs
common tools communication
community needs
cultural heritage
cuneiform
Cyberinfrastructure
database data
publication data
publishing data
sharing digital humanities
DINAA dream tools **Egypt**
Greco-Roman
Greece
Israel/Palestine Linked
Open Data maps Medieval
Mesoamerican
Mesopotamia
museum open
access open
context Open Data policy
primary content
repository scan Scholarly
Communications **site**
review survey USER
communities **user**
experience user
needs web tools
working groups workshop
zoarchaeology

DINAA Search for Indiana Archaeological Sites

Map of Counts by Region 38,353 records



Applied Filters

- General Keyword Search
 - Search Term: 'Indiana'
- Description
 - Has period
- Project
 - Digital Index of North American Archaeology (DINAA)

General Keyword Search

Indiana

Filtering Options

- Has period
 - Period 📄 38,353
- Context
- Digital Index of North American Archaeology (DINAA)
- Descriptions (Common Standards)
- Descriptions (Project Defined)
- Numeric Descriptions (Project Defined)
- Date Descriptions (Project Defined)

Paging

Search results 1 to 20 of 38,353

Search Results

Item Label	Project	Context	Category	Early (BCE/CE)	Late (BCE/CE)	Thumbnail
------------	---------	---------	----------	----------------	---------------	-----------

Linked Open Data

Is this a solution for the problems of managing and sharing archaeological data?

Documentation

- Different excavation methods bring differing documentation
- Comparison of different documentation sheets

LAYER AND ARBITRARY LAYER	DESCRIPTION
1. CONSISTENCY OF SOIL	
2. COLOUR	
3. TEXTURE	
4. BEDDING	
5. INCLUSIONS	
6. POST-DEPOSITIONAL FEATURES	
7. BASAL BOUNDARY	

DEPOSIT	12. Compaction	Loose	
10. Colour	dark brown		Munsell 10 YR 3/7
11. Texture	Silty clay		
13. Inclusions	scattered, flacks, of charcoal; large, sub-angular silt building; moderate; small pebbles		
30. Contamination:	Probable	Possible	Unlikely

Linked Data - Connect Distributed Data across the Web

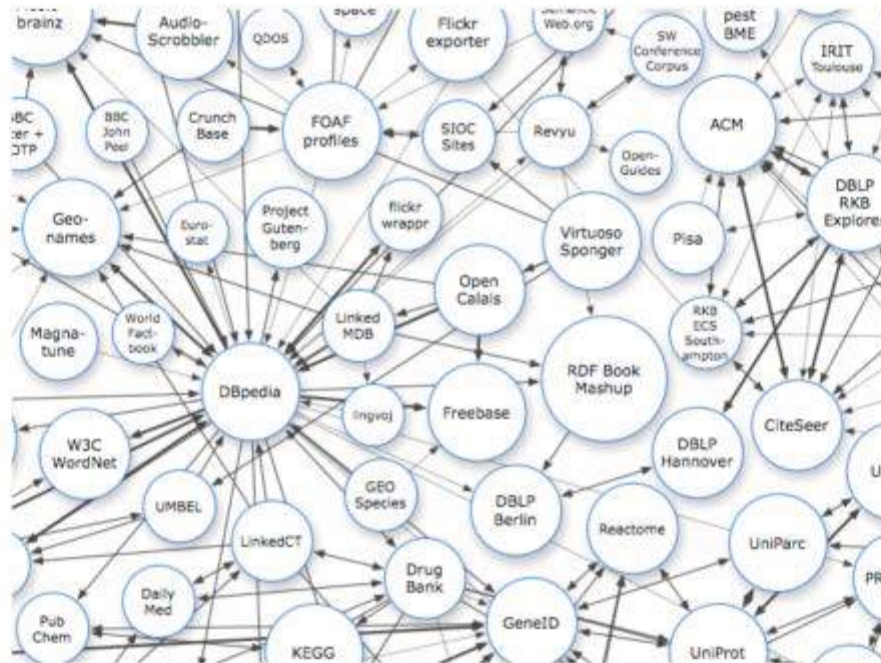
Home

- [Guides and Tutorials](#)
- [Frequently Asked Questions](#)
- [Glossary](#)
- [Images and Posters](#)
- [Presentations](#)
- [Data Sets](#)
- [Tools](#)
- [Events](#)
- [Calls for Papers](#)
- [Research](#)
- [News and Blogs](#)
- [Domains](#)
- [See Also](#)

Linked Data

Linked Data is about using the Web to connect related data that wasn't previously linked, or using the Web to lower the barriers to linking data currently linked using other methods. More specifically, Wikipedia defines Linked Data as "a term used to describe a recommended best practice for exposing, sharing, and connecting pieces of [data](#), [information](#), and [knowledge](#) on the Semantic Web using [URIs](#) and [RDF](#)."

This site exists to provide a home for, or pointers to, resources from across the Linked Data community.



Part of the Linking Open (LOD) Data Project Cloud Diagram, click for full and historical versions...



Login to edit
(authorised users only
at present)

Username: *

Password: *

Log in

- [Log in using OpenID](#)
- [Request new password](#)

Navigation

- [Feed aggregator](#)

Syndicate



Prototype Controlled Vocabulary searching

The screenshot displays a web application window titled "STAR.CHAL.WSC:dev v1.4". The interface is divided into several sections:

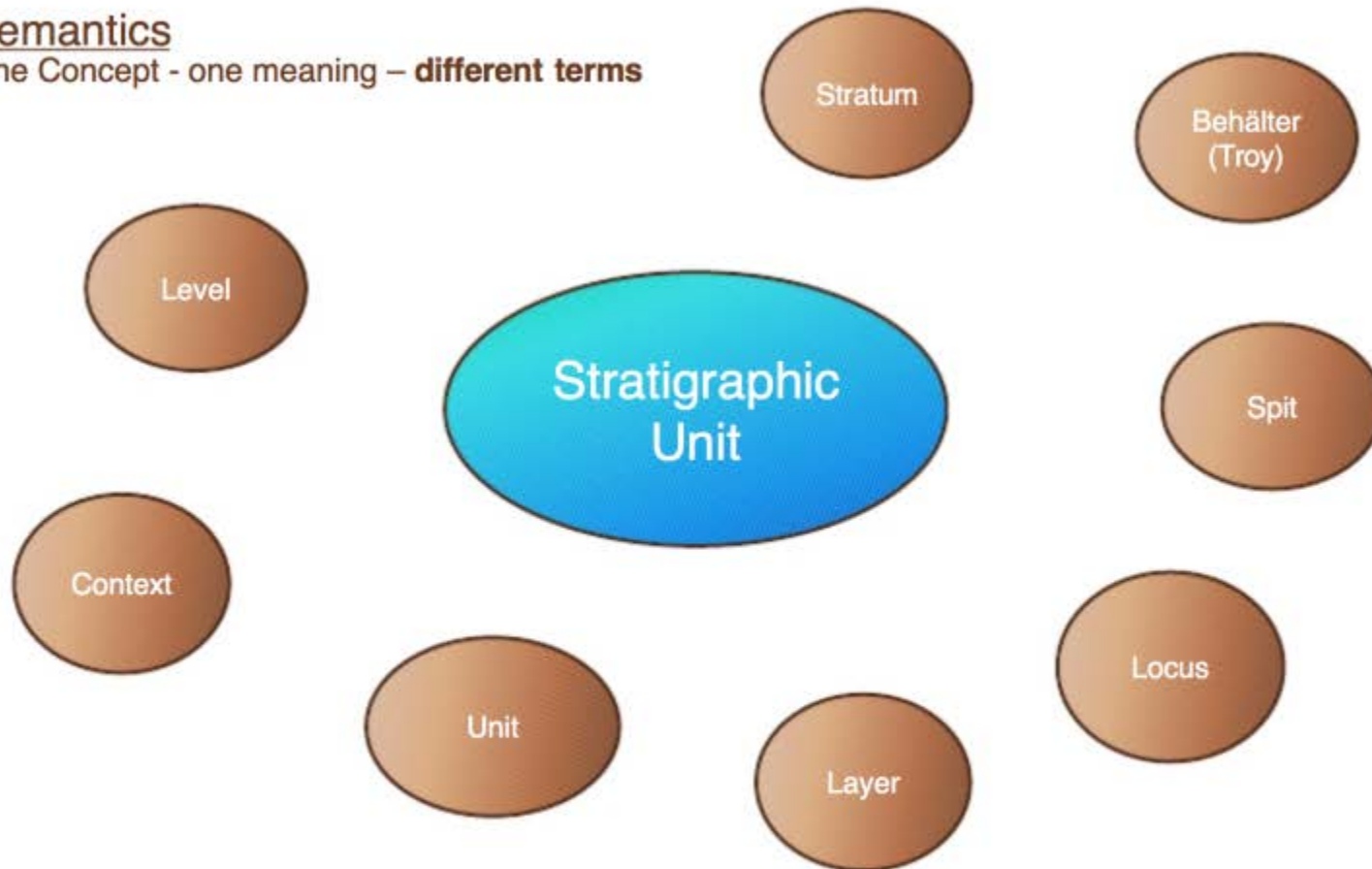
- Suggest terms:** A search box containing the word "brooch" and a "Go" button.
- Suggested terms:** A list of various brooch types, including AESICA BROOCH, ANIMAL BROOCH, ANNULAR BROOCH, Ansele Brooch, AUCISSA BROOCH, BOW AND FANTAIL BROOCH, BOW BROOCH, BROOCH, BROOCH PIN, Brooch Spring, CATERPILLAR BROOCH, COLCHESTER BROOCH, CROSSBOW BROOCH, CRUCIFORM BROOCH, DISC BROOCH, DOLPHIN BROOCH, DRAGONESQUE BROOCH, HEADSTUD BROOCH, HOD HILL BROOCH, Hook Naton Brooch, KNEE BROOCH, Lamberton Moor Brooch, LANGTON DOWN BROOCH, LONG BROOCH, NAUHEIM DERIVATE BROOCH, and PENANNULAR BROOCH.
- Expanded query for selected term:** A search query: "(*[NAUHEIM DERIVATE BROOCH] *Simple One-Piece Brooch] *BOW BROOCH]").
- Search Results:** A list of 13 items, each with a description and a "Go" button. The first few items are:
 - [String] Nauheim derivative, the spring formed in one piece with the rest of the brooch. Two turns remain of...
 - [String] Plain one piece brooch. Nauheim derivative, with narrow bow, and plain catchplate with rolled up ter...
 - [String] One piece brooch with plain catchplate, the pin missing. Nauheim derivative.
 - [String] Nauheim derivative. One piece brooch with a narrow wire bow and spring.
 - [String] Fragment of cu alloy brooch. Nauheim derivative - mid 1st century AD (Dumny 25/11/03)
 - [String] Upper part of wire Nauheim derivative brooch/...
 - [String] Nauheim Derivative brooch, pin separate, catchplate m...
 - [String] Nauheim Derivative brooch with plain wire bow; hall of a...
 - [String] Fragment of Nauheim Derivative brooch. Top of narrow...
 - [String] Complete one-piece Nauheim Derivative brooch. Two b...
- Legend:** A list of categories: Raunds Roman, Raunds Prehistoric, LEAP Silchester, and Show Colours.
- Property Table:** A table with columns "Property" and "Text". The first row shows "value" with the URL "http://www.silchester.reading.ac.uk/3/tem.php?ID=140B.SILCH:3736".

Overlaid on the bottom right is a browser window titled "Silchester Town Life Project - Project SILCH: 13736 - M...". The browser shows the address "http://www.silchester.reading.ac.uk/" and a photograph of a long, thin, light-colored brooch with a circular head, set against a blue background.

At the bottom of the screen, the Windows taskbar is visible, showing the Start button and several application icons. The system tray on the right shows the time as 17:16.

Semantics

One Concept - one meaning – **different terms**



Barrier: Semi-controlled vocabularies...

Deposit Colour		Deposit Texture	Deposit Compaction
(Reddy) Brown	Dark orange/brown	Orangy brown, very light	Firm
9Reddy) brown			Plastic
Brown			Sticky
Brown red			...y (wet)
Brown/redd			...y/firm
Dark brown			...
Dark brown			
Dark grey b			
Dark orange			
Dark orange			
darker patches			
Dark orange loam	Oran	Yellow brown	
		Yellow/orange brown	

"...another of my examples has something about some flint that is 'snuff coloured' & I don't know if I've ever seen snuff, let alone know what colour it is, or might have been over 150 years ago, and I would think it would make sense to take some kind of integrated approach from the outset,...." [G. Carver]

For data entry: Semi-controlled vocabularies represent a useful compromise somewhere between descriptive & controlled vocabularies, ***the best of both worlds!***

For data retrieval: ***The worst of all worlds*** (Re. find all the iron age post holes)

This problem arises from trying to do two different things within a single input field. Should do both, but separately – 1) describe using free text description fields, and 2) index using controlled index fields

Heritage Data Linked Data Vocabularies for Cultural Heritage

About Heritage Data ▾ Vocabulary Providers ▾ Resources ▾ Posts Feedback

Vocabularies

We have used the [STIX](#) vocabulary has then used [PoolParty](#) SKOS validator service. There are direct links to [RCAHMS](#) are also available for [RCAHMW](#) create additional downloads for each vocabulary.

- Vocabulary Providers ▾
 - English Heritage
 - Royal Commission on Ancient & Historical Monuments of Scotland (RCAHMS)
 - Royal Commission on Ancient & Historical Monuments of Wales (RCAHMW)

data to [SKOS](#) format, and each [PoolParty SKOS validator](#) service. [RCAHMS](#) [RCAHMW](#) used the [SKOS Play](#) service to create hierarchical listings for each

RECENT POSTS

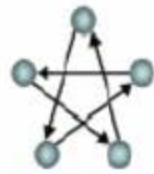
- [Vocabularies in a useful form](#)
- [Term suggestion, in a widget. What's a widget?](#)
- [Linked Open Data: a practical introduction for libraries, museums and archives – CIGS Event](#)
- [Wanted: Fledgling Moustache-wielding Crime Novelist with a penchant for URIs.](#)
- [How many beans make 5? or One man's fish is another man's poisson](#)

English Heritage

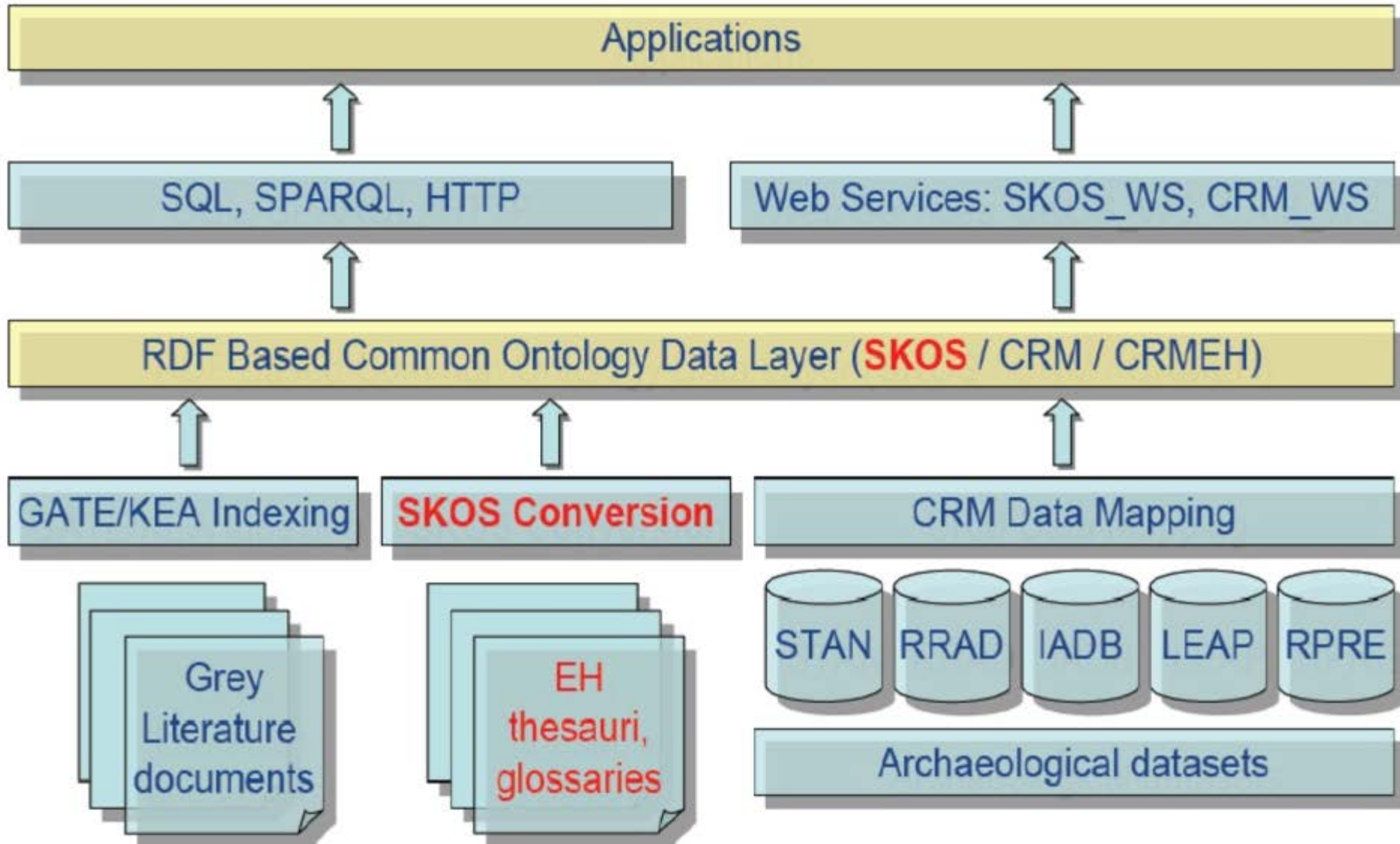
SCHEME	EXAMPLES	DOWNLOADS
ARCHAEOLOGICAL SCIENCES (EH) Used for recording the techniques, recovery methods and materials associated with archaeological sciences	MINERALOGY PEAT HUMIDIFICATION DENDROCHRONOLOGY	SKOS (RDF) Alphabetical (PDF) Hierarchical (PDF)
BUILDING MATERIALS (EH) Thesaurus of main constructional material types (eg. the walls) for Indovina of	DOLOMITE FELT LEATHER	SKOS (RDF) Alphabetical (PDF) Hierarchical (PDF)

RECENT COMMENTS

- [Heritage Vocabularies; widgets now available | Archaeogeomancy: Digital Heritage Specialists on Vocabularies in a useful form](#)

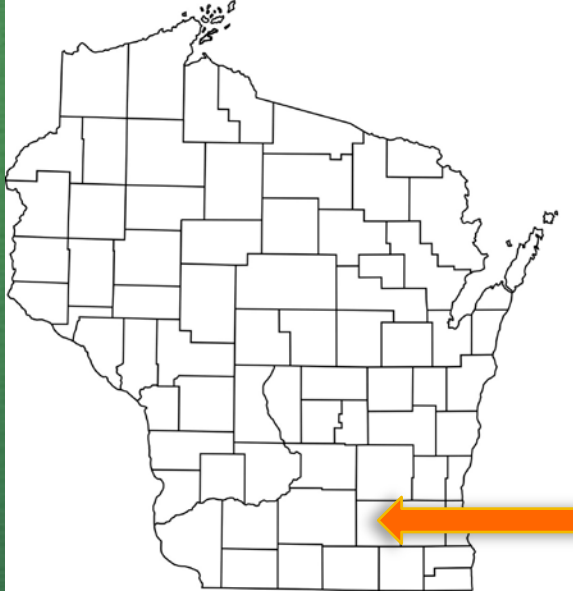


STAR - General Architecture



Example: Aztalan

- Aztalan – a prehistoric archaeological site in Southern Wisconsin dating AD 800-1200.
- Has been examined and excavated by both amateur and professional archaeologists for over 175 years



The Aztalan Site [47 JE001] Jefferson County, Wisconsin

Location of Aztalan State Park

AZTALAN NATIONAL HISTORIC LANDMARK

WISCONSIN DEPARTMENT OF NATURAL RESOURCES



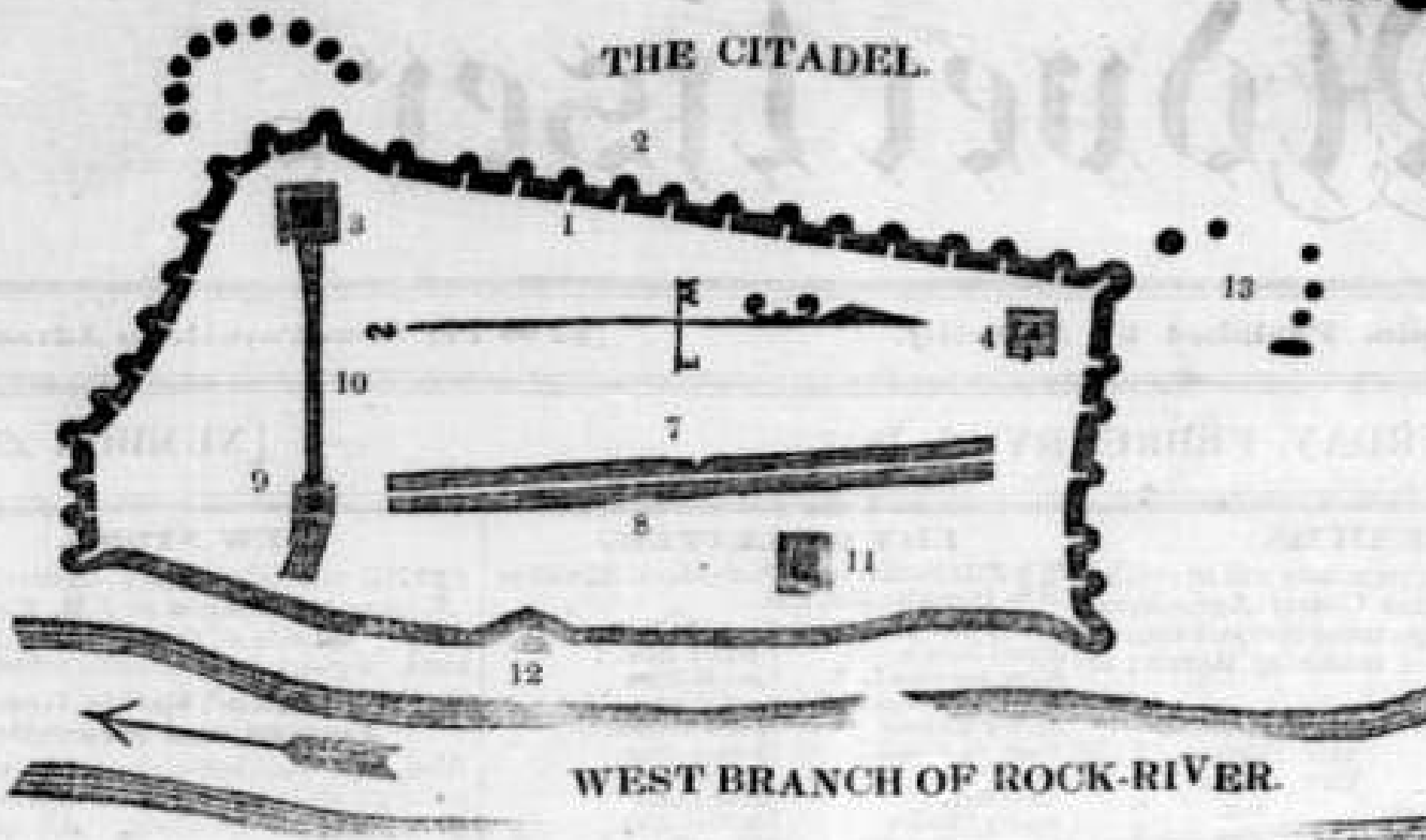


Aztalan - Looking west



Aztalan – looking south

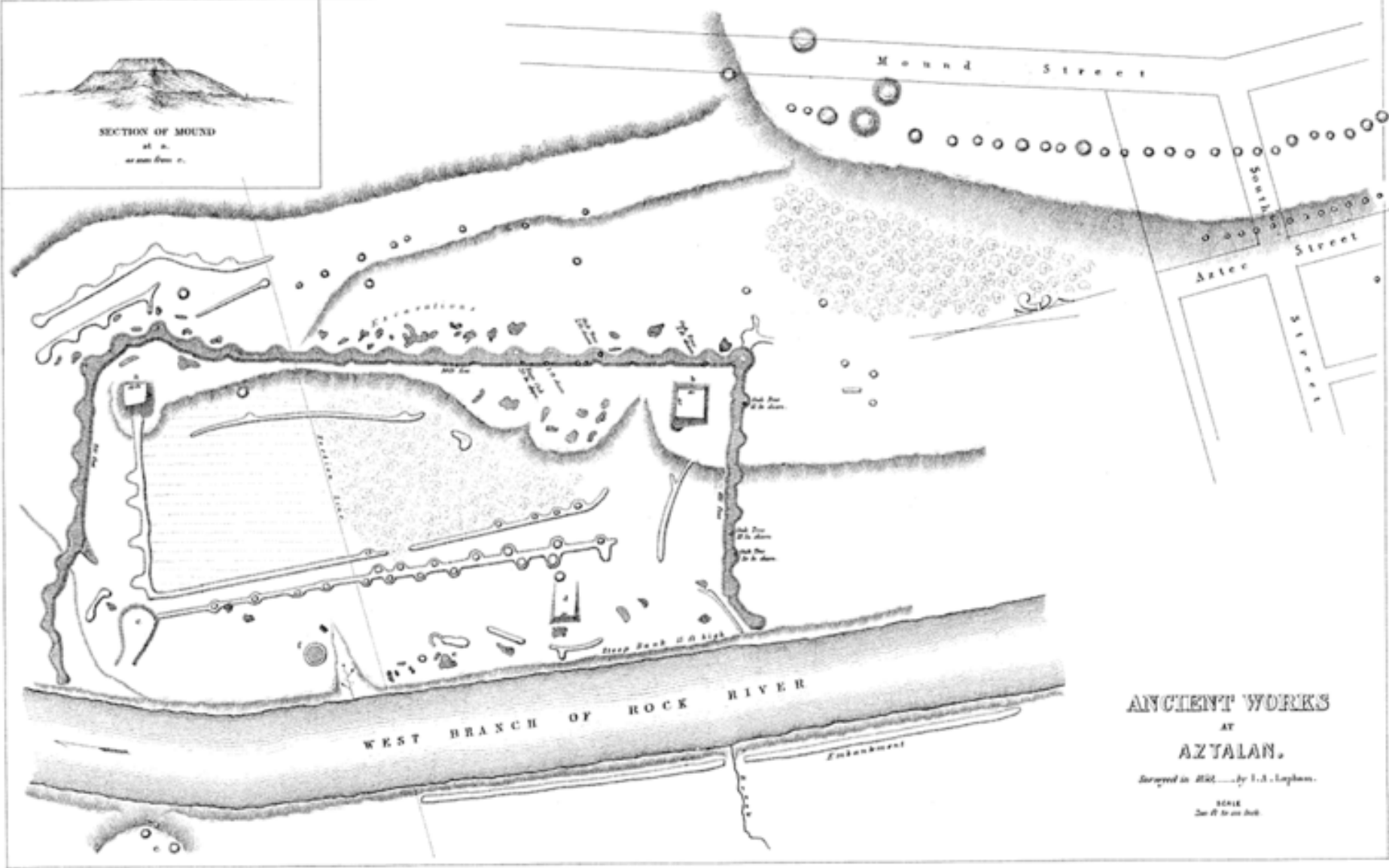
THE CITADEL.



WEST BRANCH OF ROCK-RIVER.



SECTION OF MOUND
at A.
across from C.



ANCIENT WORKS
AT
AZYTAN.

Surveyed in 1881... by J. S. Lapham.

SCALE
See A' for scale.

Madison July 6 - 1850

Dear Sir

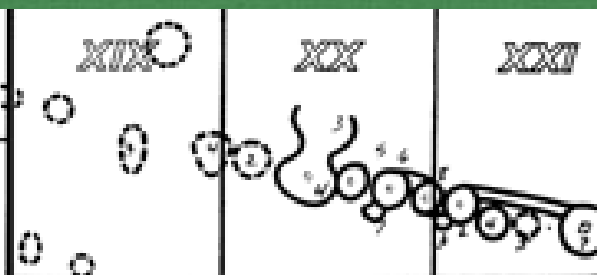
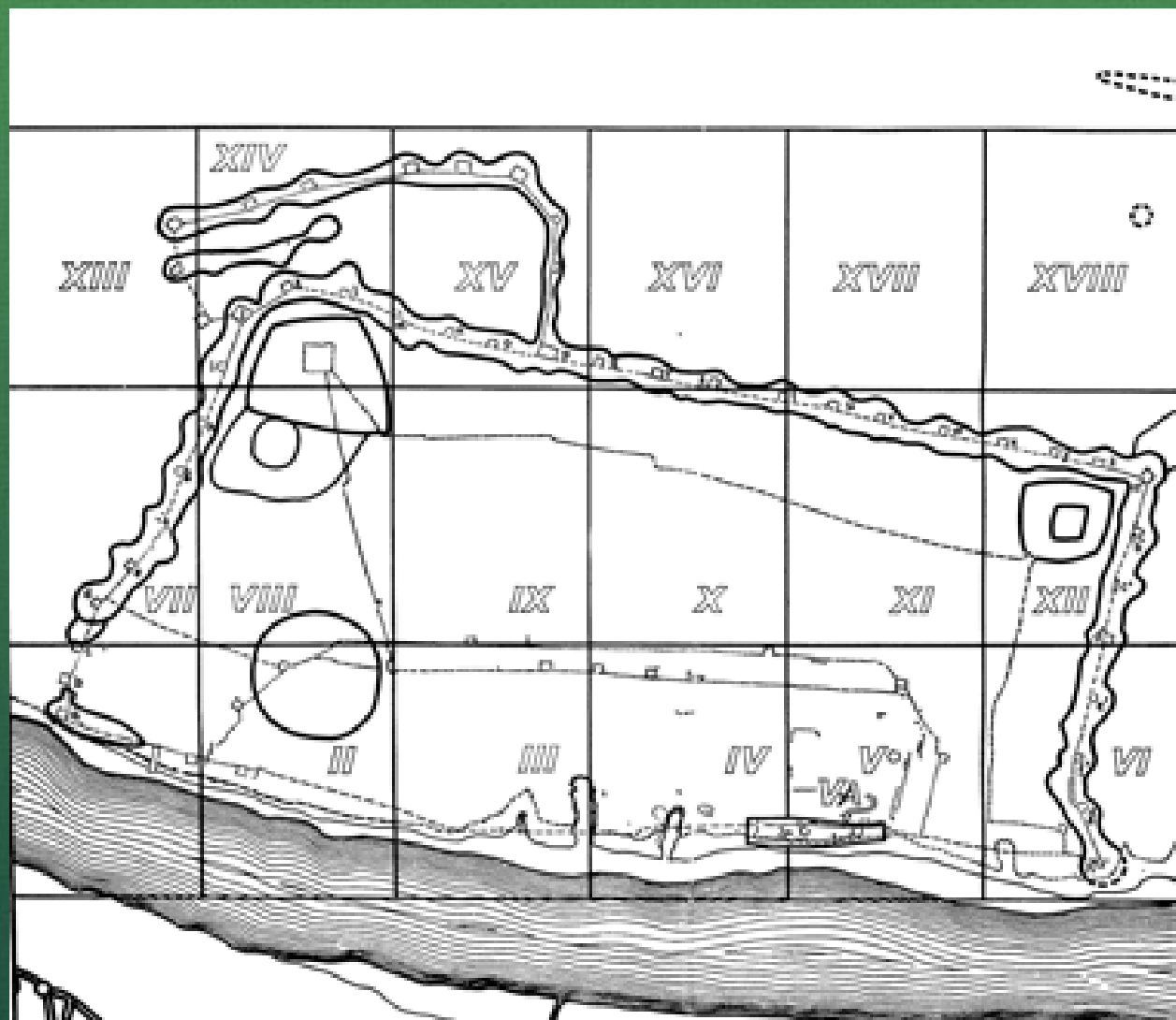
When at Astalan, ^{a few days ago} examining & surveying the ancient works, I was informed that you had made some investigations there in former times; and wishing to ascertain all the facts respecting these interesting remains I take the liberty of asking you to give me an account of the results of your examinations and reflections.

Did you find the remains of cloth? Are the works in your opinion works of defense - and for what reasons? ~~Generally~~ I would be happy to receive any ^{all} information you may communicate on the subject.

I find Judge Hyer's original map requires some corrections and additions. I ~~shall present to the public~~ ^{have made} a thorough and correct one. —

Geo. Hyer.

Yours truly
J. A. Lapham



INDEX TO
DETAIL SECTIONS
OF
ANCIENT AZTALAN
SCALE OF FEET
0 10 20 30 40

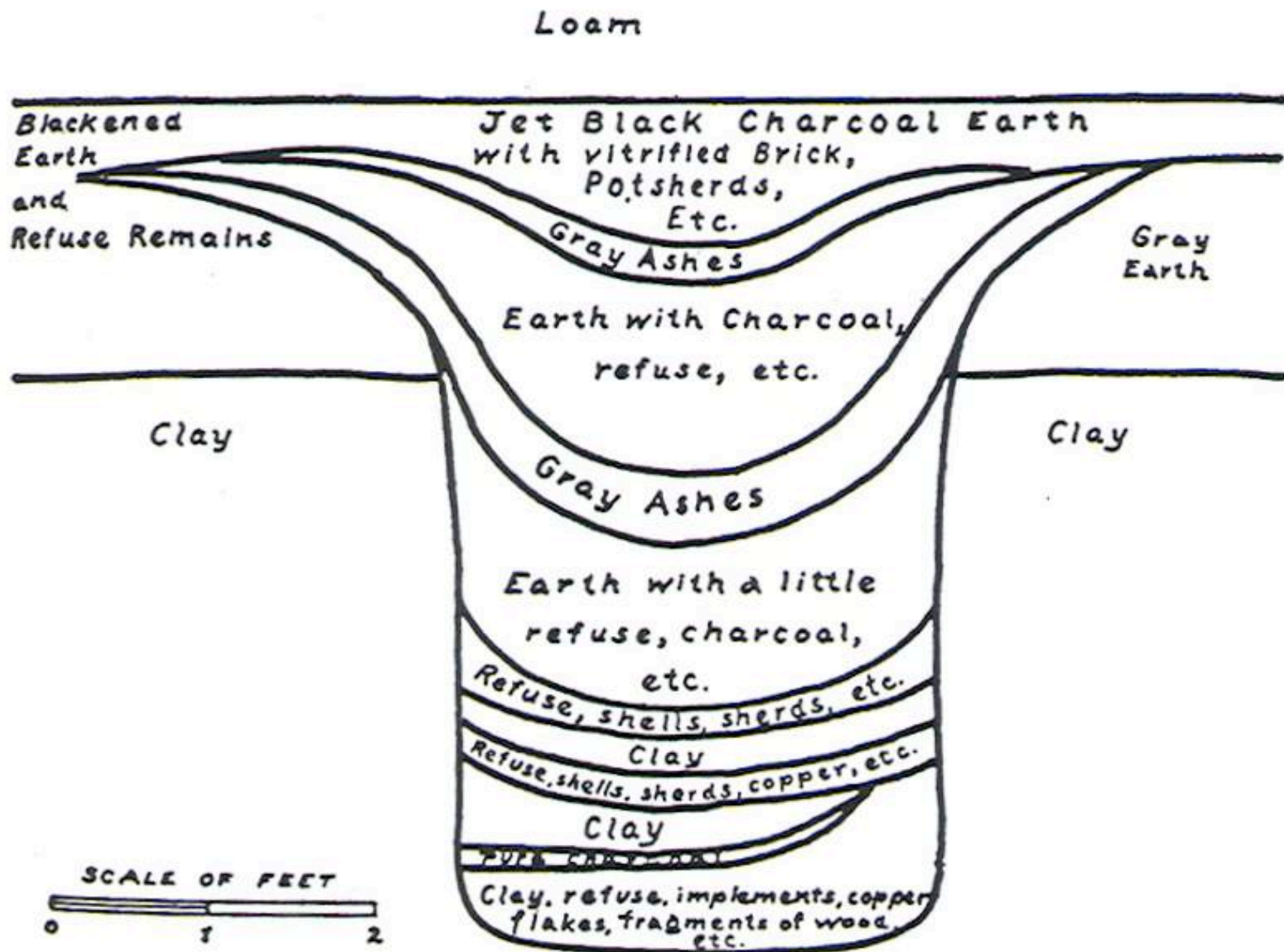


Fig. 34.—Section of refuse pit V-81.

Some examples of
Aztalan ceramics





Chipped stone hoes

Projectile points or
“arrowheads”



Ground
stone
axes



Discoidals or gaming
stones



Ground stone pendant



Sandstone abraders



Animal bone



Animal bone made into artifacts



Shell beads;
shell from
Florida coast

Mussel shell hoes



Copper tools;
Lake Superior
copper



Copper maskettes

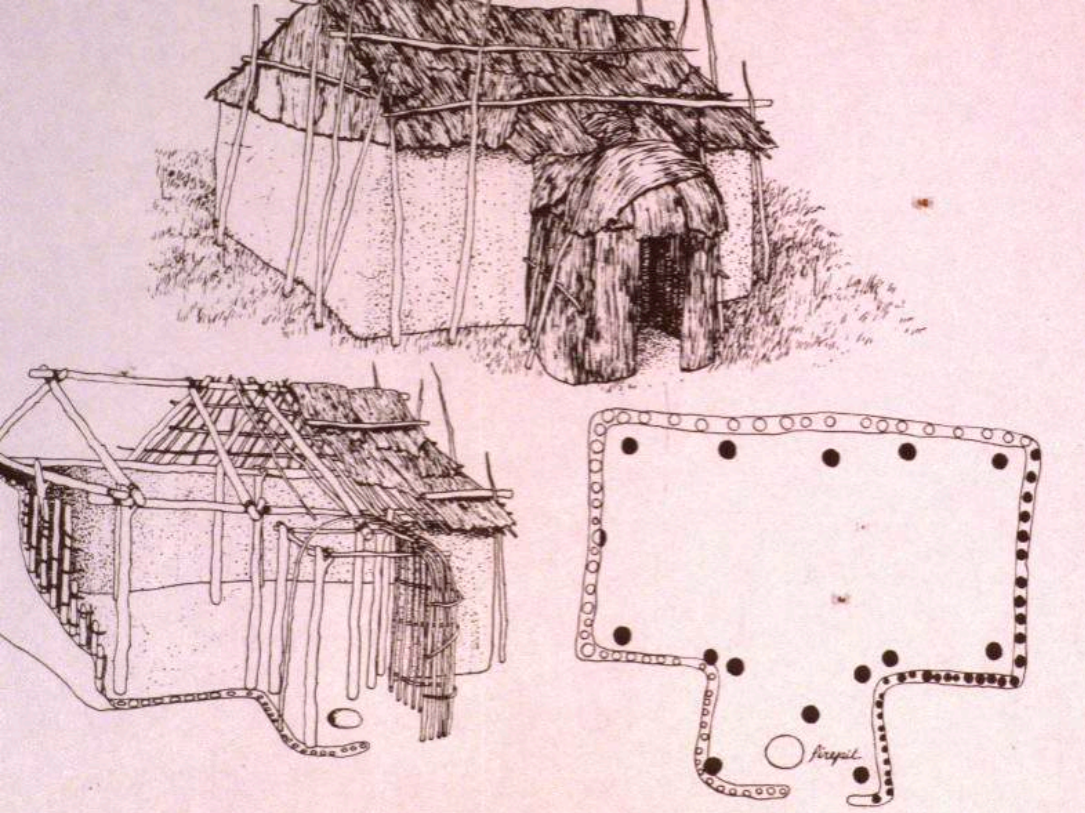


“Aztalan brick”

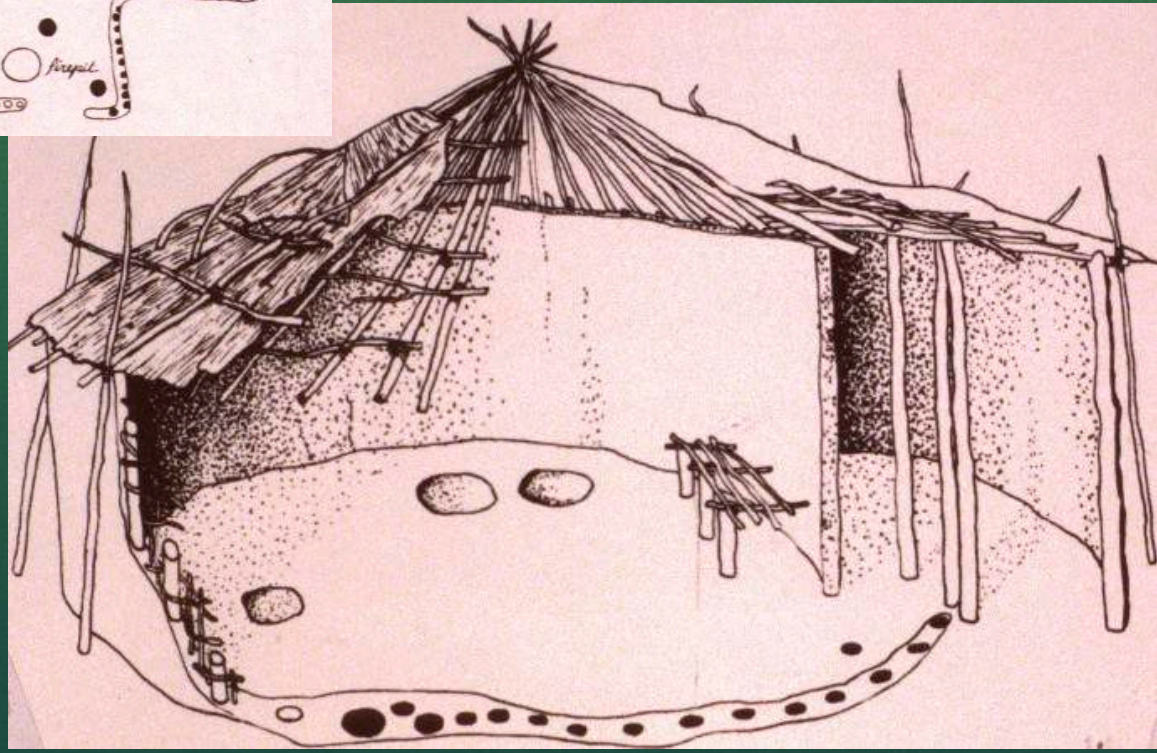


Charred corn kernels





Aztalan houses

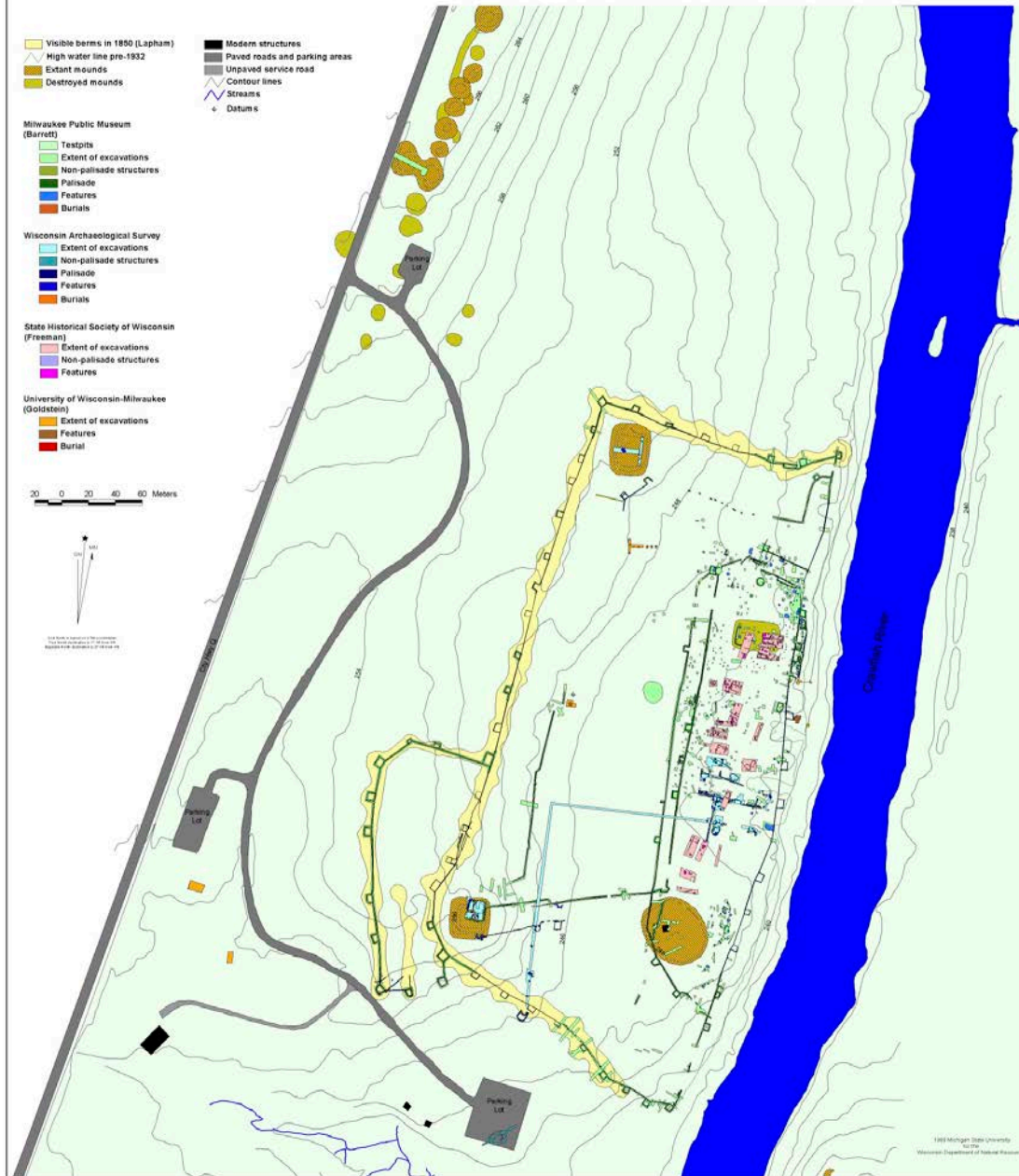


A Assiniboine hole shirt



Aztalan State Park (47-Je-0001)

Archaeological Excavations 1919-1996

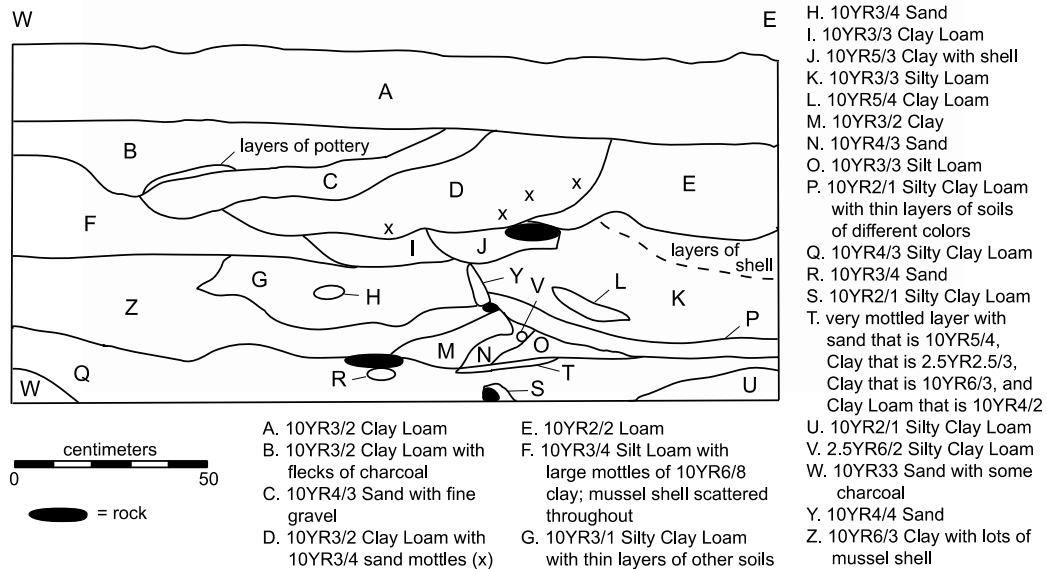


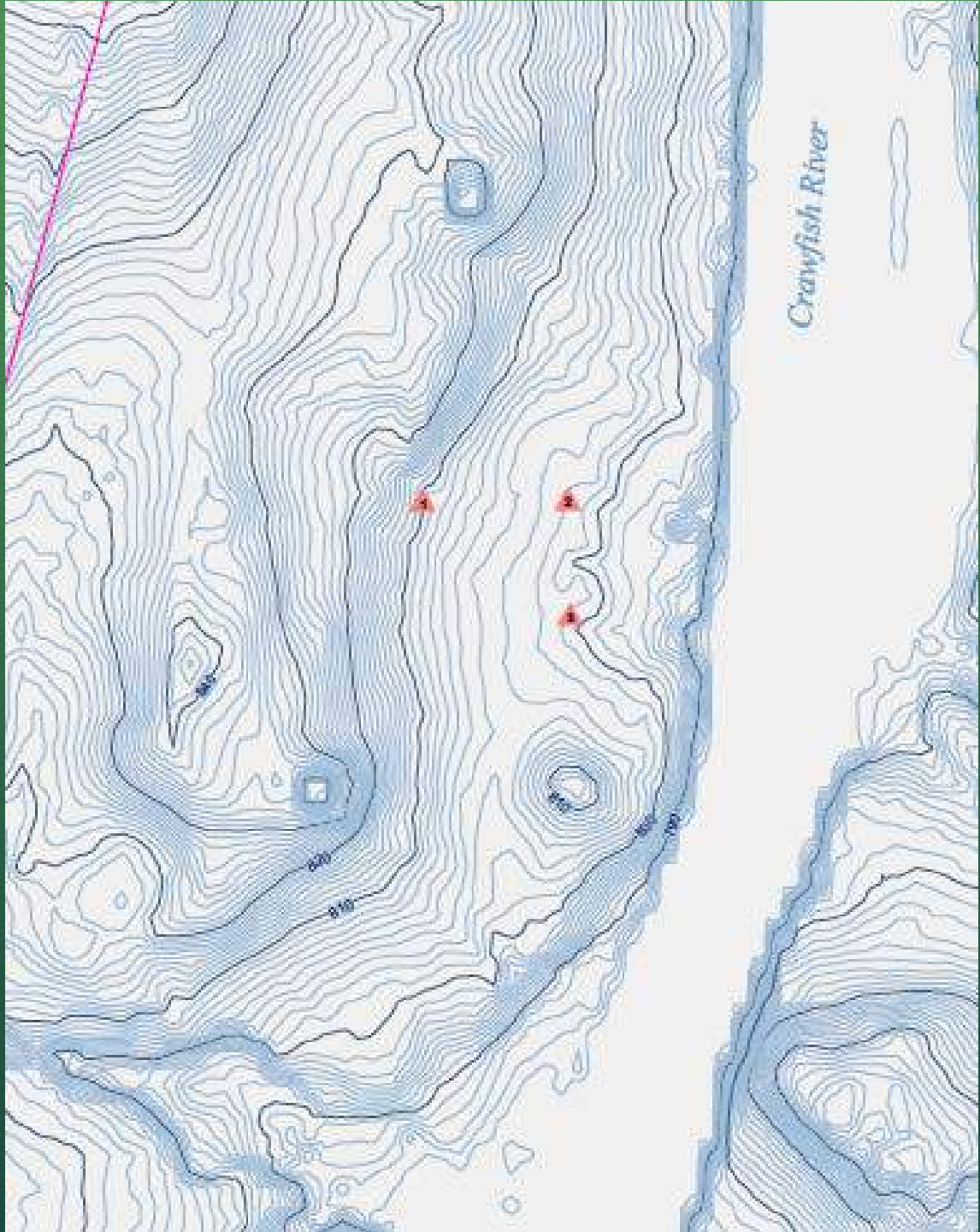
Aztalan GIS
showing all
excavations
through 1996

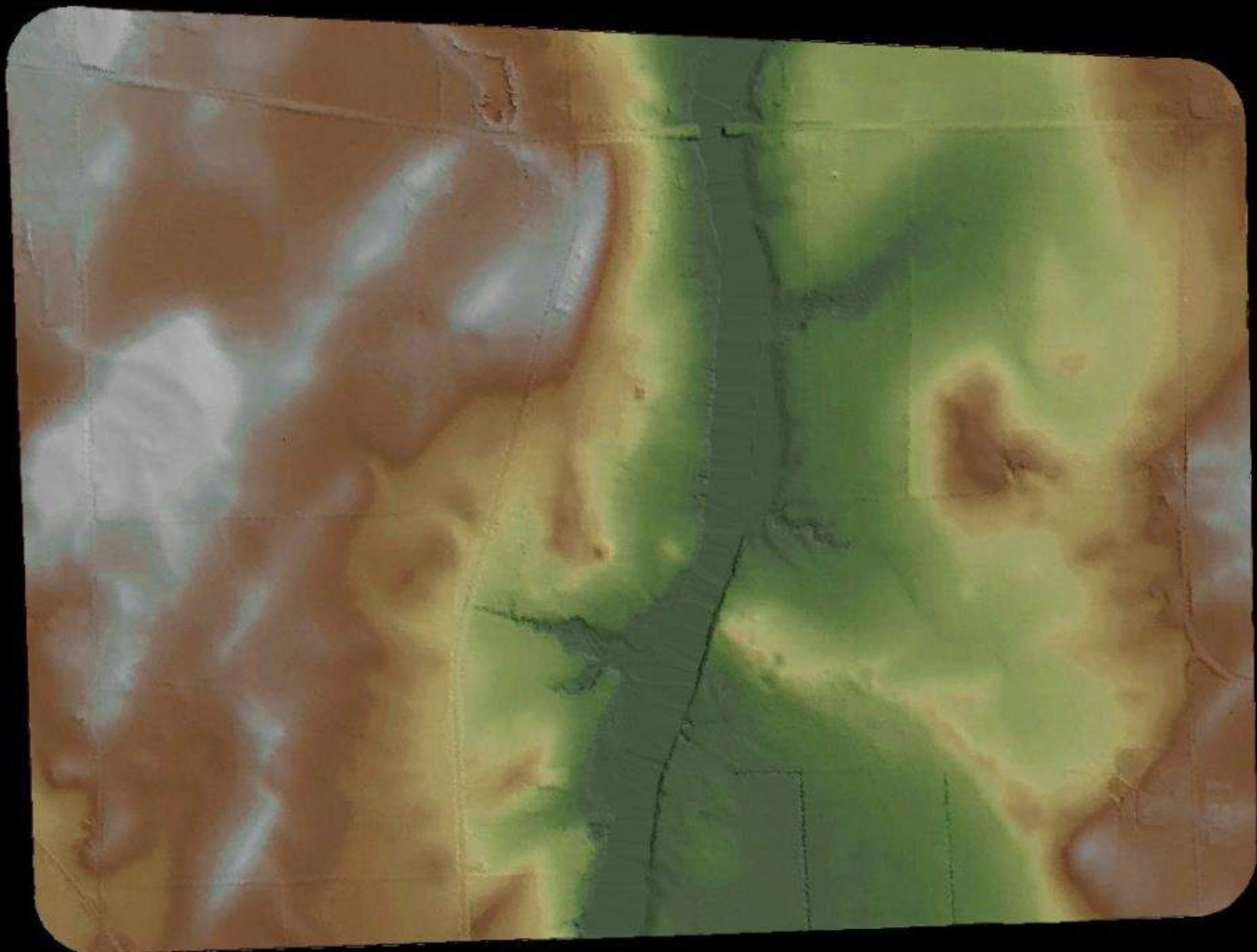


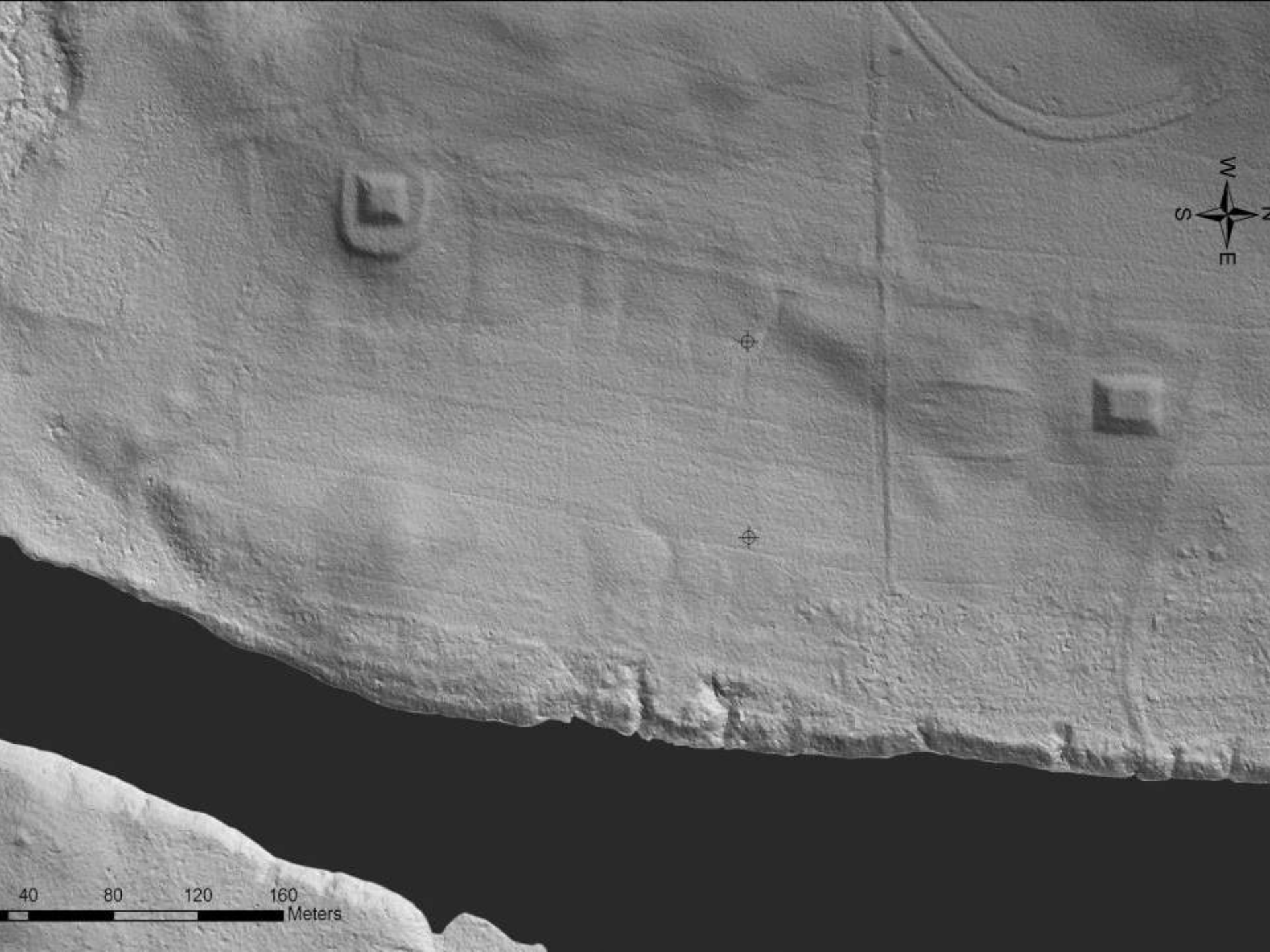


Test Pit 3 North Profile









40 80 120 160
Meters

TABLE 4. Aztalan 2013 Gravel Knoll and West-of-Palisade Radiocarbon Samples

Sample Name	Measured C14 Years (Years RCYBP)	Mean Calibrated C14 Years (BP)	Error +/- (Years)	Upper Limit (Cal BP)	Lower Limit (Cal BP)	Mean Calibrated Year AD	Lower Age Limit (AD) - 2 sigma	Upper Age Limit (AD) - 2 sigma	Material dated Context
GK1 Beta-374816	860	742	26	795	690	1210	1155	1260	Charcoal – AMS Unit 4, Fea 4a
GK2 Beta-374817	190	150	75	300	0	1800	1650	1950	Carbonized wood – AMS – Unit 3, PM2
GK3 Beta-374818	120	140	70	280	0	1810	1670	1950	Carbonized wood – AMS – Unit 3, PM2
GK4 Beta-374819	960	855	35	925	785	1095	1025	1165	Wood: Radiometric Unit 2, Fea 2
WP1 Beta-374821	960	860	35	930	790	1090	1020	1160	Charcoal – AMS Unit 25, Fea 101
WP2 Beta-374822	910	820	45	910	730	1130	1040	1220	Charcoal – AMS Unit 25, Fea 101
WP3 Beta-375567	960	860	35	930	790	1090	1020	1160	Charcoal – AMS Unit 24, Fea 103

*Dates reported as radiocarbon years before present consider the year 1950 to be the 'present' date.

*Upper and lower age limits are calculated as the two-sigma standard deviation of the calibrated radiocarbon age.

The Future

Teach to the Next Generation



CHI: Cultural Heritage Informatics



[HOME](#) [ABOUT](#) [FELLOWSHIP](#) [PROJECTS](#) [FIELD SCHOOL](#) [BLOG](#)

Cultural Heritage Informatics Initiative

Hosted and administered by the **Department of Anthropology** in partnership with **MATRIX: The Center for Digital Humanities and Social Sciences** at Michigan State University, The Cultural Heritage Informatics Initiative is a platform for interdisciplinary scholarly collaboration in the domain of digital cultural heritage. In addition, the initiative strives to equip students with the methodological skills necessary to creatively apply information, communication, and computing technology to cultural heritage materials, questions, and challenges.

[Learn more about the CHI Initiative >](#)

from the *Cultural Heritage Informatics* blog:

Cultural Heritage and Politics: Dealing with the Closure of the Illinois State Museum

October 13, 2015 | [Read More](#)

On October 1st the **Illinois State Museum (ISM)**, and its affiliates, closed its doors to the public. The staff is still going to work, but no one is able to visit the 138 year-old museum system. I have spent the past three summers working as a graduate assistant on the **Morrison Village Archaeological Project**, an ongoing collaborative research project between MSU and the **Dickson Mounds Museum (DMM)**, an affiliate of the Illinois State Museum. Since 2008, Dr. Jodie O'Gorman, Chair of the Anthropology Department and Associate Professor at MSU, and Dr. Michael Conner, Associate Curator of Anthropology at DMU, have trained undergraduates and volunteers in excavation and laboratory techniques at the Morrison Village site, located within 2 miles of the DMU.

[Read More](#)

Current and Recent CHI Projects



Nkwejong

The Lansing area has a long and deep history of use by Native communities in the Great Lakes. While there were only a few permanent habitations in the area, it was well known as a route



Visualizing Southern Television

Between 1942 and 1960s, television networks spread across the United States like wildfire. "By 1964, more than 40 million sets were around."



Cuboriente

The Cuboriente website project is dedicated to a digital image mapping of Africa-inspired religio-cultural heritage in the eastern, Oriente region of Cuba.



Virtual Black Romulus Cultural Heritage Map

Digitizing and preserving African American history and heritage is an important mission in the digital age. Projecting across to 6-13 and

MSU Campus Archaeology Program



Credit for Publishing Data



Web-based research data publication

[Home](#) [About](#) [Projects](#) [Browse](#) [Lightbox](#) [Tables](#) [Weblog](#)

Search



Project: San Diego Archaeological Center

Collections maintained by the San Diego Archaeological Center

Number of Views: 3591

Project / Collection Overview

The San Diego Archaeological Center (SDAC) is a nationally recognized leader in the curation of archaeological collections, curating collections for the Department of Defense, City of San Diego and private parties. The Center accepts for accession archaeological collections to preserve in perpetuity for the benefit of the public. The Center is dedicated to making the collections available to the public as a cultural resource through educational programming and exhibits, research projects, tours, volunteer opportunities, student internships and cultural use.

This sample of SDAC collections published in Open Context represents only a portion of the overall collections managed by the SDAC.

For more information, please visit the [SDAC Website](#).

Suggested Citation for this Project Overview:

San Diego Archaeological Center. "San Diego Archaeological Center: (Overview)" (Released 2010-02-02). San Diego Archaeological Center (Ed.) Open Context. <<http://opencontext.org/projects/3FAAA477-5572-4B05-8DC1-CA264FE1FC10>>

Content Associated with this Project

Items in these categories have been viewed: 111262 times. (Ranked: 23 of 54)



[Small Find](#)

3010 items contained in this category.



[Context](#)

105 items contained in this category.



[Site](#)

49 items contained in this category.



[Groundstone](#)

46 items contained in this category.



[Reference Collection](#)

17 items contained in this category.

Downloadable Tables with this Project

[Text export](#)

Associated People

[Ad Muniz](#), [Marge Burton](#), [Kelly Higelmine](#)

Project Editorial Status

Peer reviewed

Suggested Citation

San Diego Archaeological Center. "San Diego Archaeological Center: (Overview)" (Released 2010-02-02). San Diego Archaeological Center (Ed.) Open Context. <<http://opencontext.org/projects/3FAAA477-5572-4B05-8DC1-CA264FE1FC10>>

Browse this Project



[SDI-4360](#)

1216 items contained in this context. Dating between: 1950 to 2015



[SDI-15037](#)

811 items contained in this context. Dating between: 1950 to 2015



[CA-SDI-14951](#)

625 items contained in this context. Dating between: 1950 to 2015



[SDI-16915](#)

140 items contained in this context. Dating between: 1950 to 2015



[CA-SDI-16585](#)

122 items contained in this context. Dating between: 1950 to 2015



[CA-SDI-16680](#)

83 items contained in this context. Dating between: 1950 to 2015



[SDI-16436](#)

40 items contained in this context. Dating between: 1950 to 2015



[SDI-10438](#)

29 items contained in this context. Dating between: 1950 to 2015



[SDI-17204](#)

18 items contained in this context. Dating between: 1950 to 2015



[SDI-17428](#)

12 items contained in this context. Dating between: 1950