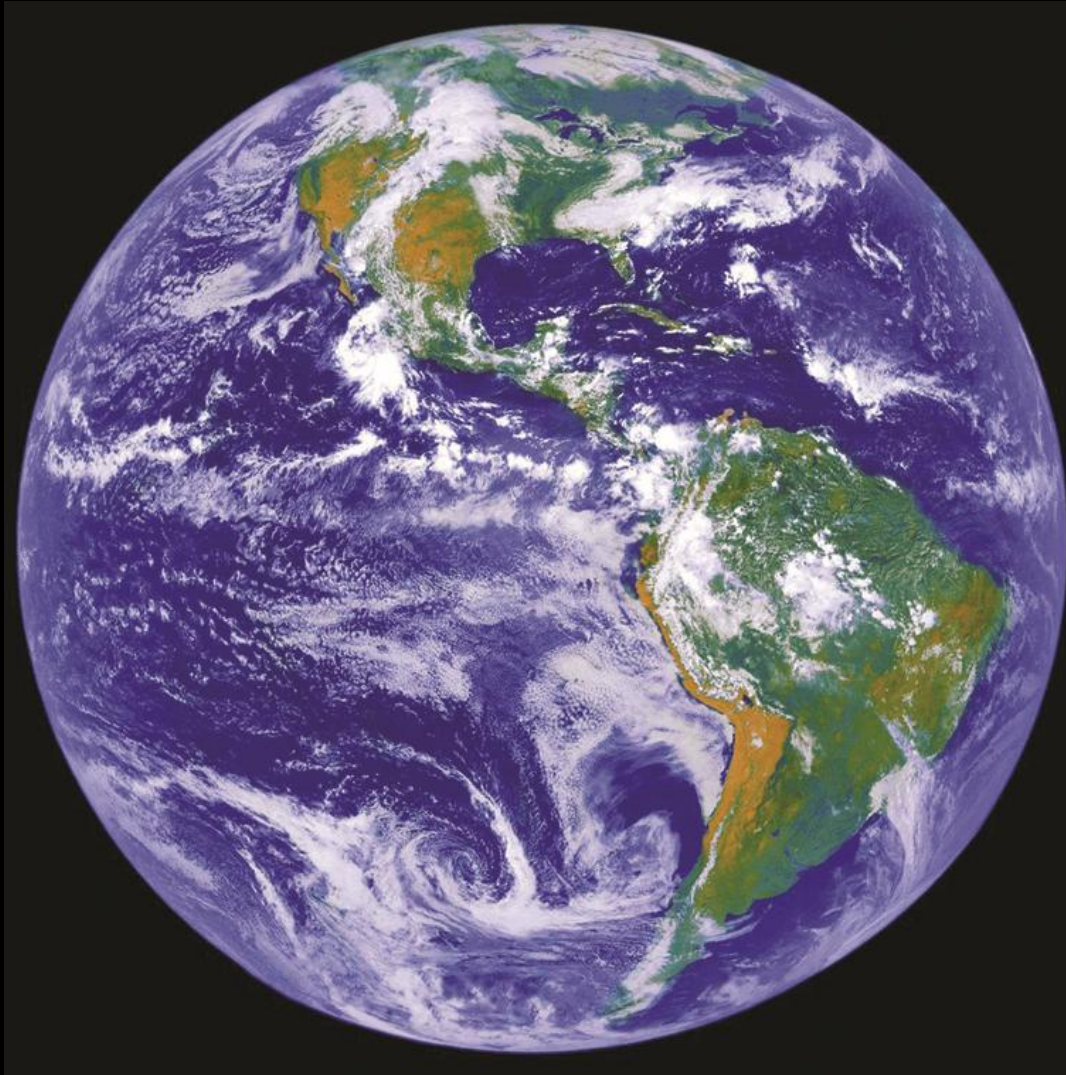


Expanding International Research and Grant Development at MSU



**Office of
International Research
Collaboration**

**Coffee Break
International Center Spartan Room B
March 21, 2013**

Reducing Global Poverty and Improving Health



Keys Elements of “Large Awards”

Supply-Side Project Inventory: MSU Strengths

- Technical Expertise
- Geographical Expertise

+

- Infrastructure
- Capacity

- Reputation
- Strategic Vision

+

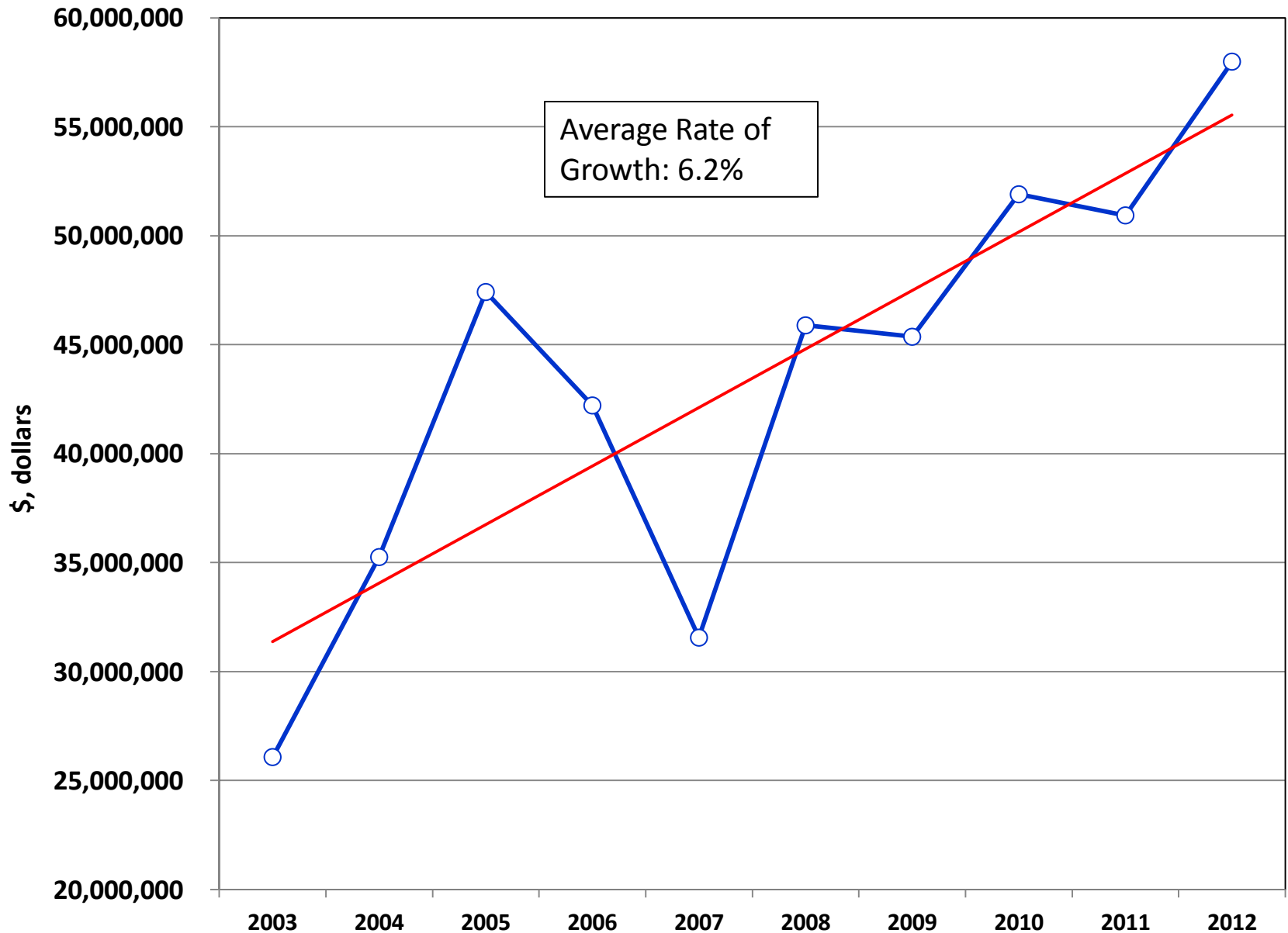
- Market Intelligence
- Relationships

*Aligned
Scholarship
and
Engagement*

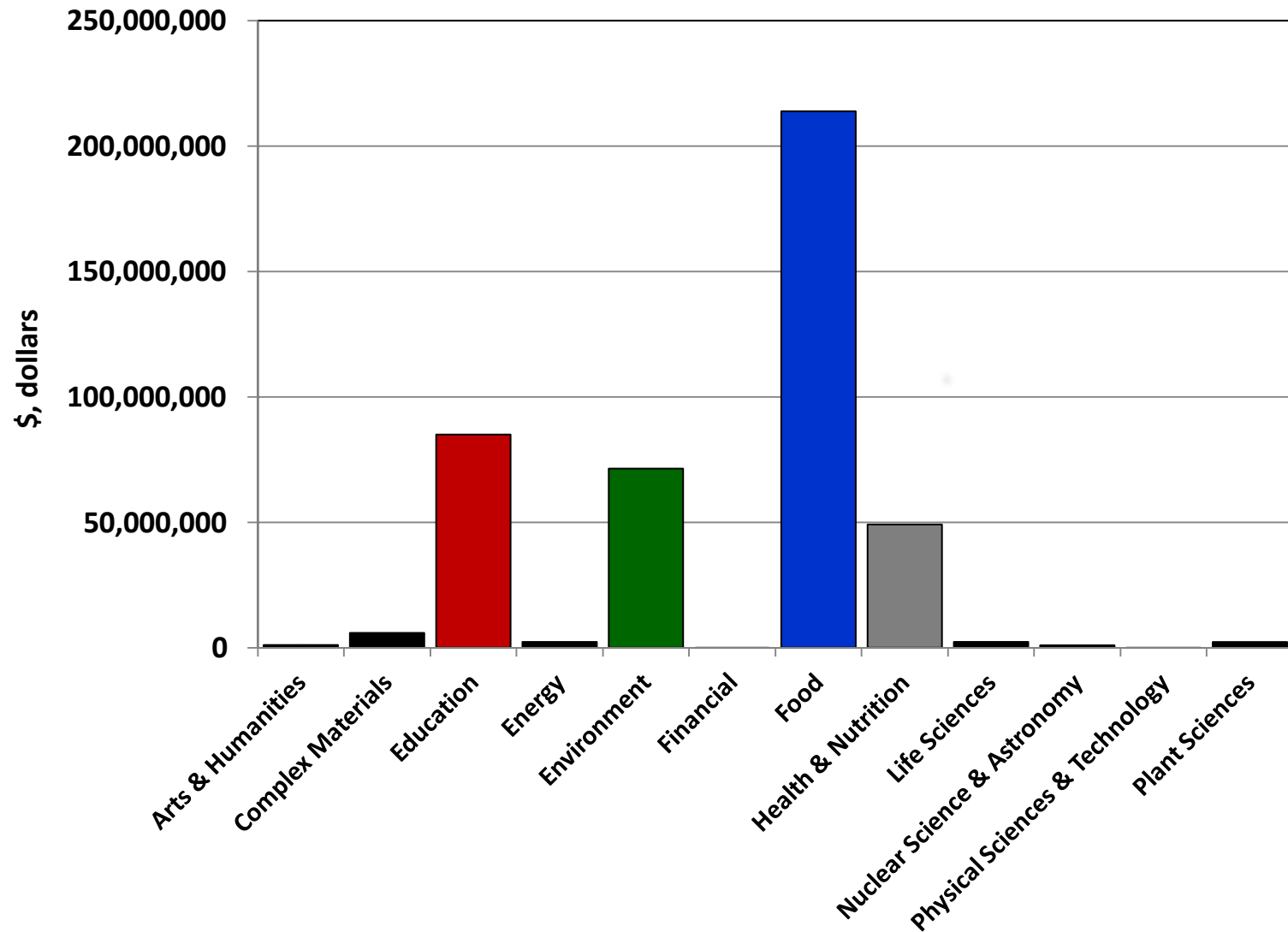
***Large
Awards***

**Demand-Side
Funding:
Opportunities
& Priorities**

Trend in MSU International Research Funding: 2003-2012 (fiscal year)



Funded MSU International Projects by Theme, 2003-2012



Source: MSU Contracts and Grants, OIRC Analysis

MSU International Awards by Themes: 2003-12

Food
\$213.8M

49.2%

Capacity Building

- Human
- Organization
- Policies & Institutions

Poverty Reduction & Nutrition Improvement

- Value chain Development
- Education
- Economic Development

Conservation

- Natural Resource
- Conservation & Management
- Climate Change
- Land Use
- Water Use

Environment & Sustainability

\$71.4M

16.4%

Ecosystems

- Biodiversity
- Invasive Species
- Agriculture
- Intensification

Climate Change

- Carbon Markets
- Land Use Dynamics

Bioeconomy

- Technological Advancement & Discovery
- Biobased Products

Resources

- Air
- Land
- Water
- Markets Regulation

Placemaking

- Land Use Standards & Policies
- Cities/Regions
- Knowledge Economy
- Energy

Food Safety & Quality

- Public/Private Standards
- Training
- Economic Development
- Nutrition
- Public Health

Social/Human Dimensions

- Policies & Institutions
- Attitudes
- Behavior
- Ethics
- Values
- Gender

Nutrition

- Agronomic & Genetic Bio-fortification

Capacity Development

- Teaching & Training Staff of Private Public Organizations
- Foreign Universities, Governments, Corporations
- Topics as Food Safety & Quality, Business Management, Economics, Gender, Agricultural Extension

Programmatic Assessment, Evaluation & Development

- Higher Ed Admin
- Monitoring & Evaluation

Health Behavior

- Activity Patterns
- Diet
- Gender

Pandemic/ Zoonotic Diseases

- Insect Borne
- Malaria
- Dengue Fever
- Zoonotic

Education
\$85.0M
19.6%

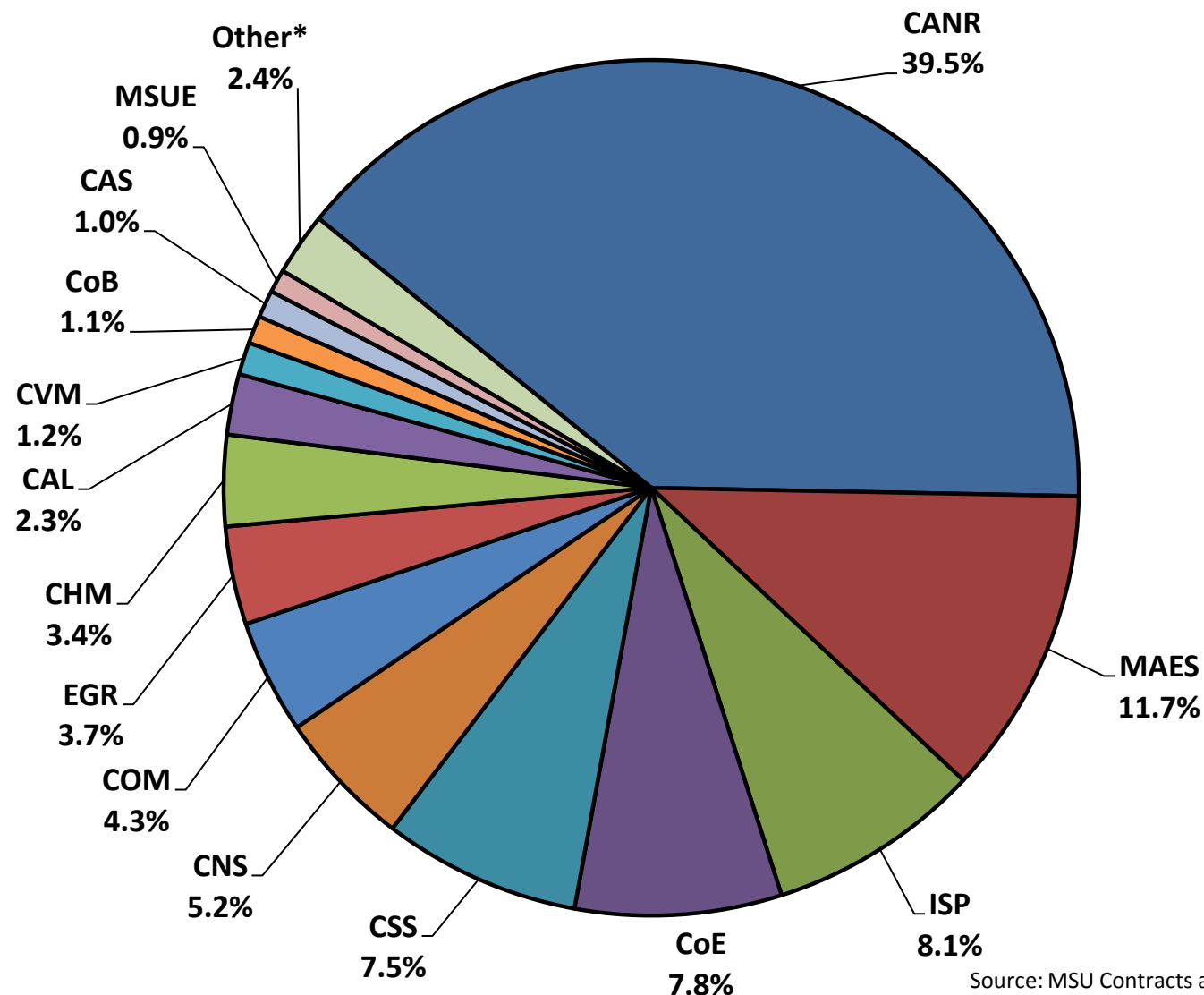
Health & Nutrition

\$49.1M

11.3%

Other
\$15.3M
3.5%

MSU International Research Awards by MAU, 2003-2012



* Other MAU's

Source: MSU Contracts and Grants, OIRC Analysis

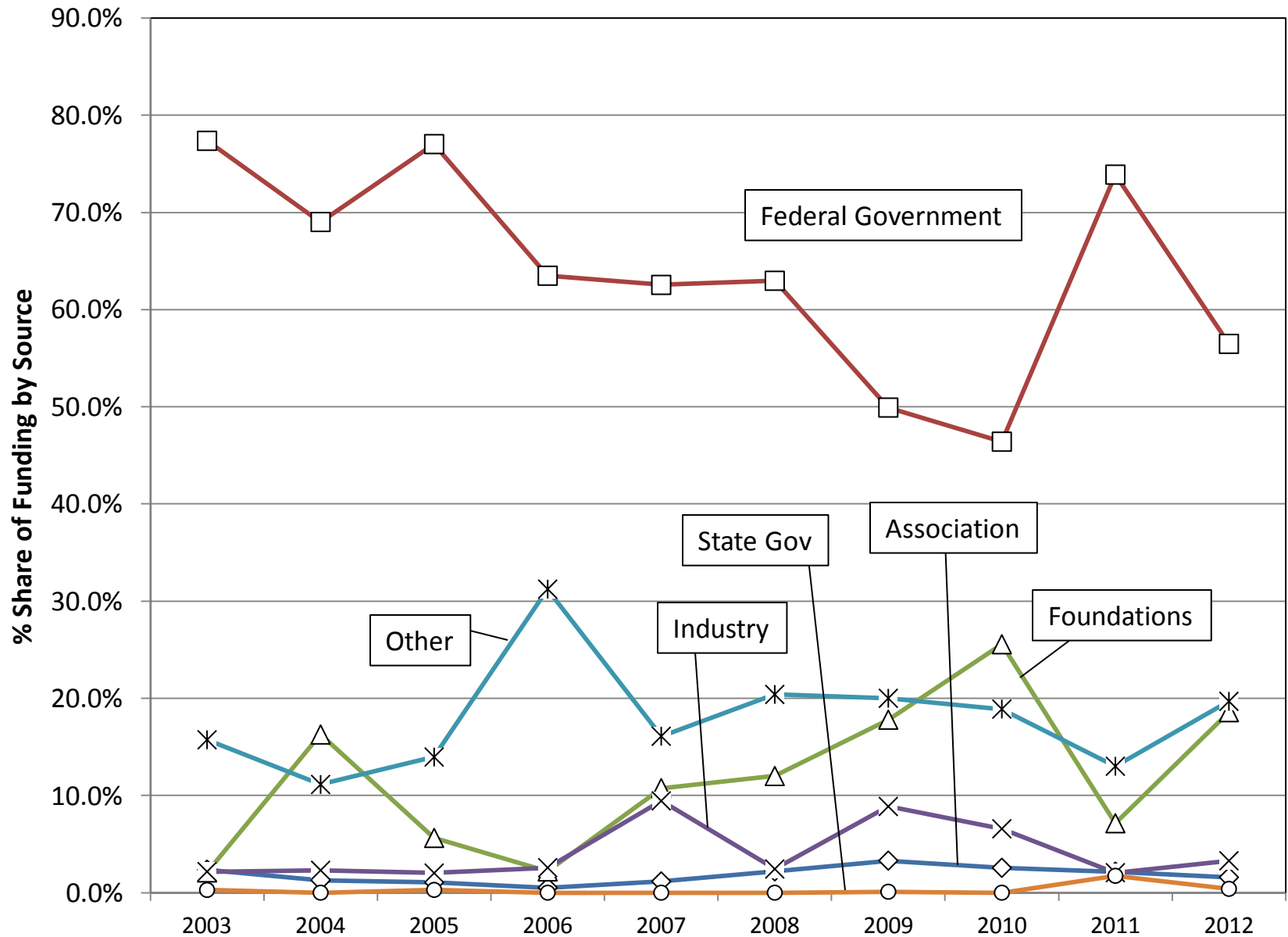
MSU International Research Funding by Theme/Region: 2003-2012 (\$, millions)

Theme	Sub-Theme	East Asia and Pacific	Europe and Eurasia	Global*	Near East	South and Central Asia	Sub-Saharan Africa	United States	Western Hemisphere	Totals
Education	Capacity Dev	17.55	0.51	30.92	3.71	5.50	9.74	1.64	1.93	71.50
	Prog Assessment			5.41	6.47		0.03	0.50	1.06	13.47
Environment	Bioeconomy	0.03	3.84	0.88	0.17	1.58	0.50	0.13	0.24	7.35
	Climate Change	0.73	0.14	3.18		0.01	0.43	0.12	0.03	4.64
	Crime	0.33	0.03	0.05	0.20					0.60
	Ecosystems	5.67	1.35	25.09	0.07	0.15	3.23	0.18	3.25	38.98
	Placemaking	1.36	3.01	1.26	0.34	0.85	3.14	0.23	0.75	10.95
	Resources	1.88	0.15	0.37	0.00	0.19	0.44	0.92	1.10	5.05
	Social/human Dimensions	0.15	0.85	2.58	0.00	0.20	0.06			3.84
Food	Biotechnology-Food	0.10	0.07	2.85	0.28	0.14	5.83		0.07	9.34
	Capacity Building	2.40	4.37	15.44	0.11	3.63	50.30		23.24	99.49
	Conservation			0.11			1.80		0.18	2.09
	Diseases-Crop			0.13						0.13
	Food Safety	0.07	0.03	2.42	0.16		12.65	0.01	0.13	15.46
	Poverty Reduction	0.01		21.90	0.00	1.88	49.33		14.18	87.30
Health & Nutrition	Diseases-Non-Infectious	0.43		0.85	0.00	0.00	0.56		1.11	2.94
	Diseases-Pandemic	0.23		8.64	0.00	0.06	24.84		0.27	34.04
	Health Behavior	1.68	1.64	4.44	1.02	0.18	1.41		1.04	11.42
	Maternal & Child Health						0.04	0.14	0.14	0.32
	Nutrition			0.33						0.33
	Toxicology			0.08						0.08
Other**		1.26	1.22	7.25	0.21	1.51	1.50	0.31	2.05	15.31
Totals		33.87	17.21	134.16	12.74	15.87	165.82	4.18	50.78	434.63

* Research projects that were not unclassifiable by country/region or included multiple countries, in the CGA database

**Other Themes, e.g. Complex Materials, Energy, Plant Sciences

MSU International Research Funding by Source: 2003-2012



MSU International Research by Funding Source, 2003-2012

Source of Funding	Amount, \$	% Share of Total
Federal Government	273,595,122	62.9%
Other	79,208,343	18.2%
Foundation	54,539,367	12.5%
Industry/CO	17,910,886	4.1%
Association	8,007,335	1.8%
State of Michigan	1,369,226	0.3%
Total	<u>434,630,278</u>	<u>100%</u>

* Original source of funding is US Government, however, MSU is a subcontractor to another institution.

Source: MSU Contracts and Grants, OIRC Analysis

Top Twenty MSU International Funding Partners, 2003-2012

Rank	Funding Partner	Amount, \$	% of Total Funding	Cummulative % Share of Total
1	AGENCY FOR INTERNATL DEVELOPMENT	125,251,037	28.8%	28.8%
2	NATL SCIENCE FOUNDATION	47,117,516	10.8%	39.7%
3	EDUCATION U.S. DEPT OF	31,458,860	7.2%	46.9%
4	GATES - BILL AND MELINDA FOUNDATION	28,959,598	6.7%	53.6%
5	NATL INST OF HEALTH - NIH/PHS	23,292,752	5.4%	58.9%
6	NATL AERONAUTICS AND SPACE ADM	10,194,425	2.3%	61.3%
7	DEVELOPMENT ALTERNATIVES INC	6,731,364	1.5%	62.8%
8	ACADEMY FOR EDUCATIONAL DEVELOPMENT	5,557,131	1.3%	64.1%
9	USDA - FOREIGN AG SER	5,145,566	1.2%	65.3%
10	SUN WAH EDUC FOUNDATION	5,000,000	1.2%	66.4%
11	NATL INST OF ALLERGY & INFEC DIS -NIH	4,491,209	1.0%	67.5%
12	INST OF INTERNATL EDUCATION	4,305,491	1.0%	68.5%
13	FOGARTY INTL CENTER -NIH/PHS	3,925,061	0.9%	69.4%
14	INTL FOOD POLICY RESEARCH INSTITUTE	3,773,708	0.9%	70.2%
15	HEWLETT FOUNDATION - WILLIAM & FLORA	3,727,000	0.9%	71.1%
16	FRAUNHOFER USA	3,577,850	0.8%	71.9%
17	INTL POTATO CENTER	3,114,770	0.7%	72.6%
18	US DEPT AGRICULTURE	3,037,265	0.7%	73.3%
19	SWEDISH INTL DEVELOPMENT AGENCY	2,921,489	0.7%	74.0%
20	VARIOUS SCHOOLS	2,866,079	0.7%	74.6%

Source: MSU Contracts and Grants, OIRC Analysis

Water*, A Summary of Theme Specific Research Activity, 2002-2011

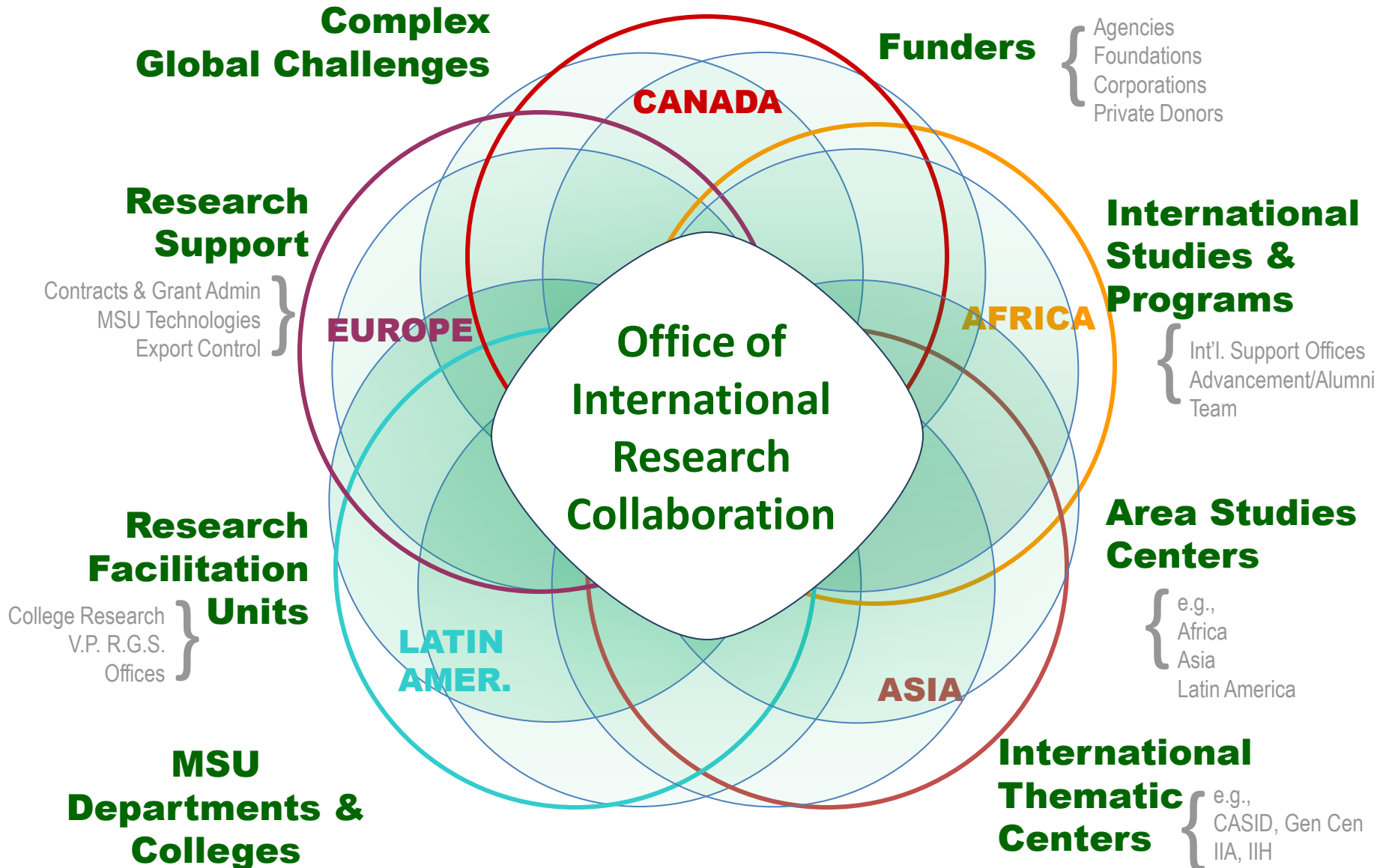
Funded Amount*	College	Department	Lead Faculty	Funding Sources	Funding Partners	Major Theme	Sub-Theme	Country Partners
<u>\$22,403,509</u>	CANR	26 Different Departments	93 Different Lead Faculty	US_Gov Funded	78 Different Partners	Complex Materials	Sensors	Global
	ABRes			Corporation		Environment	Ecosystems	United States
	MSUE			Non-Profit		Food	Resources	Southern Africa
				State Gov		Physical Sciences & Technology	Animal Sciences & Zoology	Costa Rica
				US Gov		Energy	Biotechnology-Food	Zimbabwe
				Foundation		Life Sciences	Technology	Kenya
						Plant Sciences	Conservation	
							Alternative Energy	
							Capacity Building	
							Food Safety	
							Placemaking	
							Horticulture	
							Packaging	

Note: this is an itemization of the key features of the activity conducted in theme of water, the rows are not aligned.

•Water \$ awards are not comprehensive/ inclusive since only the term “water” was searched in the CGA database project title, terms such as hydrology, lake, fisheries, marine, etc. were not searched.

Source: MSU Contracts and Grants, OIRC Analysis

Expanding International Research and Grant Development at MSU



Mission of the Office of International Research Collaboration

OIRC will work collaboratively with ISP centers to assist faculty in developing transdisciplinary research proposals for external funding that focus on college and university international/global research priorities.

ISP Shared Strategic Intentions

Invest in projects that:

- build on MSU's existing strengths
- are focused and strategic around MSU/college priorities
- are forward-looking and high impact
- integrate with scholarship
- have a high return on investment

Priority support will be given to projects:

- that focus on MSU's international/global research priorities in food security, sustainable environment and development, health and nutrition, and education
- with the potential to generate significant external funding

Strategic Thrust of OIRC

- **Rebalance resources** – human & financial – to catalyze & facilitate these research collaborations
- ***Reduce transaction costs*** to faculty:
 - Identify strategic international partner institutions & qualified potential international research collaborators
 - Cultivate potential domestic & international sources of funding for international research collaborations
 - Provide pre-award support to secure & administer external funding for international research collaborations
 - Coordinate proposal development with relevant college/department post-award support staff

Services for International/Global Research and Technical Support

Proposals/Prospecting Pre-award Services & Support

- ☐ Market Demand Assessment
- ☐ Internal/External Networking
- ☐ Research Project Conceptualization
- ☐ Research Collaborator Coordination
- ☐ Research Proposal Initiation
- ☐ Proposal Writing Coordination
- ☐ Post-Award Services & Support: *Limited*

Office of International Research Collaboration Contacts

Jen Marcy, M.A. Grant Coordinator (517) 884-0947

Email: marcyjen@msu.edu

John Whims, Ph.D. External Relations Director

(517) 432-7090 Email: whimsj@msu.edu