

Campus research resources to help you

January 16, 2014 – 3-4pm



Welcome

- **Doug Gage**, Internal Grants (gage@msu.edu)
- **Jon Harrison**, The Funding Center (harris23@msu.edu)
- **Kathy Walsh**, Research Facilitation and Dissemination (walshka@msu.edu)
 - Sobha Ramanand ramanand@msu.edu
 - Anne E. Plovanich-Jones hrvatska@msu.edu
- **Katie Cook**, Office of Sponsored Programs FARRKAT1@OSP.MSU.EDU
- **Evonne Pedawi**, Contract and Grant Administration (PEDAWI@CGA.MSU.EDU)
- **Nick Beckloff**, Research Technology Support Facility (beckloff@msu.edu)
- **Benjamin Ong**, Institute for Cyber-Enabled Research (iCER) (ongbw@msu.edu)
- **Hailey Mooney**, Data Management Services (mooneyh@msu.edu)



Doug Gage

- internal grants <http://vprgs.msu.edu/internal-grants>
- institutionally limited proposals <http://vprgs.msu.edu/ilp>
- MSU research centers and institutes
<http://vprgs.msu.edu/msu-research-centers-and-institutes>
- MSU Bioeconomy Network
<http://bioeconomy.msu.edu/node/6>
- liaison with Great Lakes Bioenergy Research Center
<http://glbrc.msu.edu/>



Jon Harrison

- Librarian <http://lib.msu.edu/contact/subjectlibrarian/>
- The Funding Center
<http://staff.lib.msu.edu/harris23/grants/0fdncoll.htm>
- Grants and Related Resources
<http://staff.lib.msu.edu/harris23/grants/> and blog
<http://blogpublic.lib.msu.edu/index.php?blog=51>
- Grant-writing workshops
<http://staff.lib.msu.edu/harris23/grants/workshop.htm>
- One of the curators of Spartan Ideas blogsite
<http://spartanideas.msu.edu/>



Office of Research Facilitation and Dissemination

1. Provides information regarding **open grant competitions** and RFPs (please send an email to research@msu.edu to be added to our mailing list)
 - **SciVal Funding:** licensed software product to help researchers find new funding opportunities (*access on computer linked to MSU internet*) <http://www.funding.scival.com/home#b>
 - **VPRGS website** (<http://vprgs.msu.edu/find-funding>)
 - **MSU Libraries** “Grants and Related Resources” blog at <http://blogpublic.lib.msu.edu/index.php?blog=51>
 - **Other information sources:** <http://grants.gov/>



Office of Research Facilitation and Dissemination

2. Assigns **grant writing** support personnel to help with approved cross-disciplinary, all-university, or multi-department proposals
3. Provides **support for visits to federal** and other grant officers for discussion of possible projects (generally matched by college or department)



Office of Research Facilitation and Dissemination

4. Offers direct **training** – and subventions for third-party training
 - Write Winning Grant Proposals
 - MSU/FBI Academic Alliance Conference
 - Coffee Breaks
5. **Communicates internally** about the MSU research news (websites, email faculty announcements)

Loraine Hudson, director, 432-4499, ljh@msu.edu



Websites

<https://vprgs.msu.edu/>

- portal to MSU research support (funding, collaboration, compliance, commercialization, policies, training)

<http://spartanideas.msu.edu/>

- Spartan Ideas (blog aggregator curated by MSU Libraries)

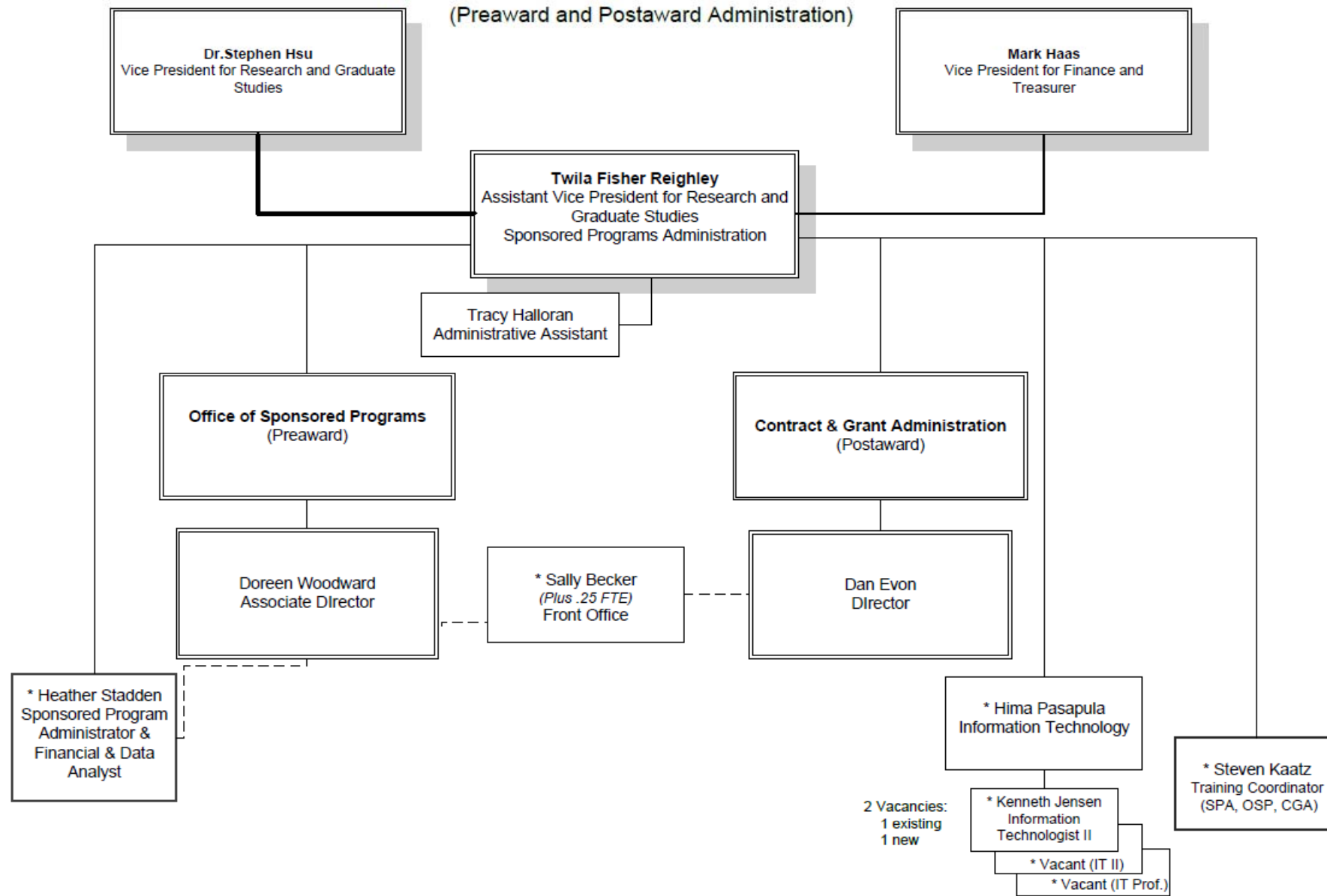
<http://vprgs.msu.edu/form/research-seminars-email-list>



Sponsored Programs Administration
Office of Sponsored Programs
Contract & Grant Administration
<https://cga.msu.edu/Default.aspx>

Sponsored Programs Administration

(Preaward and Postaward Administration)



1/10/2014

* (asterisk) represent staff engaged in shared activities supporting OSP and/or CGA

Office of Sponsored Programs (OSP)

MSU's Preaward Office

Mission: The Office of Sponsored Programs (OSP) is a unit under the Vice President for Research and Graduate Studies with an organizational affiliation to the Vice President of Finance. Our mission is to provide superior pre-award support to faculty, staff, and the Contract & Grant Administration.

What does OSP do?

- Reviews & approves proposals
- Negotiates agreements & accepts awards
- Advises faculty & staff about external funding agencies
- Liaison with funding agency prior to award/contract
- MSU's Authorized Representative for sponsored projects

Office of Sponsored Programs (OSP)
(Preaward Administration)

Doreen Woodward
Office of Sponsored Programs
Associate Director

Katie Cook
Assistant Director
Grants & Other Contracts

Vacant
Assistant Director
Federal Contracts
& URO Contract Lead

Proposals

Awards & Agreements

Mike Litteral
Manager

Maria Skinner
Manager

Craig O'Neill
Manager

Gladys Raymond
Manager

Diane Cox
Manager

PG 1

PG 2

PG 3

C 1

C 2

Denise Lator
Proposal
Administrator

Amanda Blank
Proposal
Administrator

Pat Hampton
Proposal
Administrator

Fred Salas
Senior
Contract
Specialist

Ashley Russell
Agreement
Administrator

David Tuthill
Agreement
Administrator

Katie Winkler
Agreement
Administrator

Michael Braem
Agreement
Administrator

Julia Miskiewicz
Agreement
Administrator

Jennifer Lafferty
Proposal
Specialist

Erin Schlicher
Proposal
Specialist

Jennifer Sergeant
Proposal
Specialist

Aimee Wilson
Proposal
Specialist

Karen Lavery
Award
Specialist

Jarrod Thornton
Award
Specialist

Administrative Support
TBD

Refer to SPA Org. Chart for all supportive services
Updated on 1/10/2014

Contract & Grant Administration

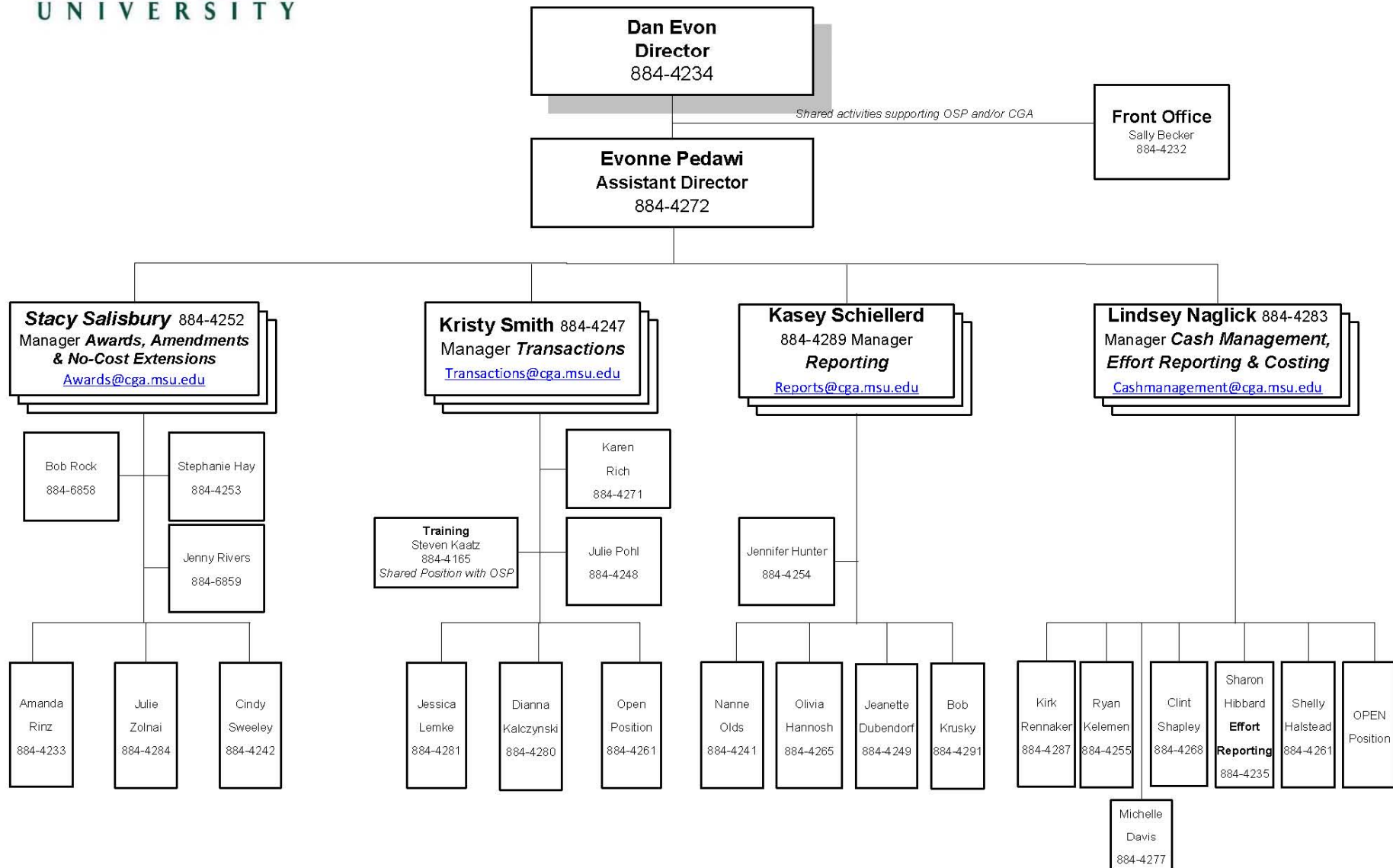
Mission Statement: is a unit dedicated to superior post-award administration. Our mission is to support MSU's research and creative endeavors by providing timely, accurate, and courteous assistance to faculty and support staff with the financial and contractual administration of their grants, cooperative agreements, and contracts.

What does CGA do?

- CGA monitors the award from account set up through close out/audit.
- CGA is the post award/compliance office.
- Advises faculty & staff about external agency regulations
- The liaison with the Sponsor for post award transactions including amendments, prior approval requirements, progress reports, and other inquiries

Post-Award - Contract & Grant Administration (CGA)

Room 2 Admin Bldg (517) 355-5040 Fax 353-9812 cga.msu.edu



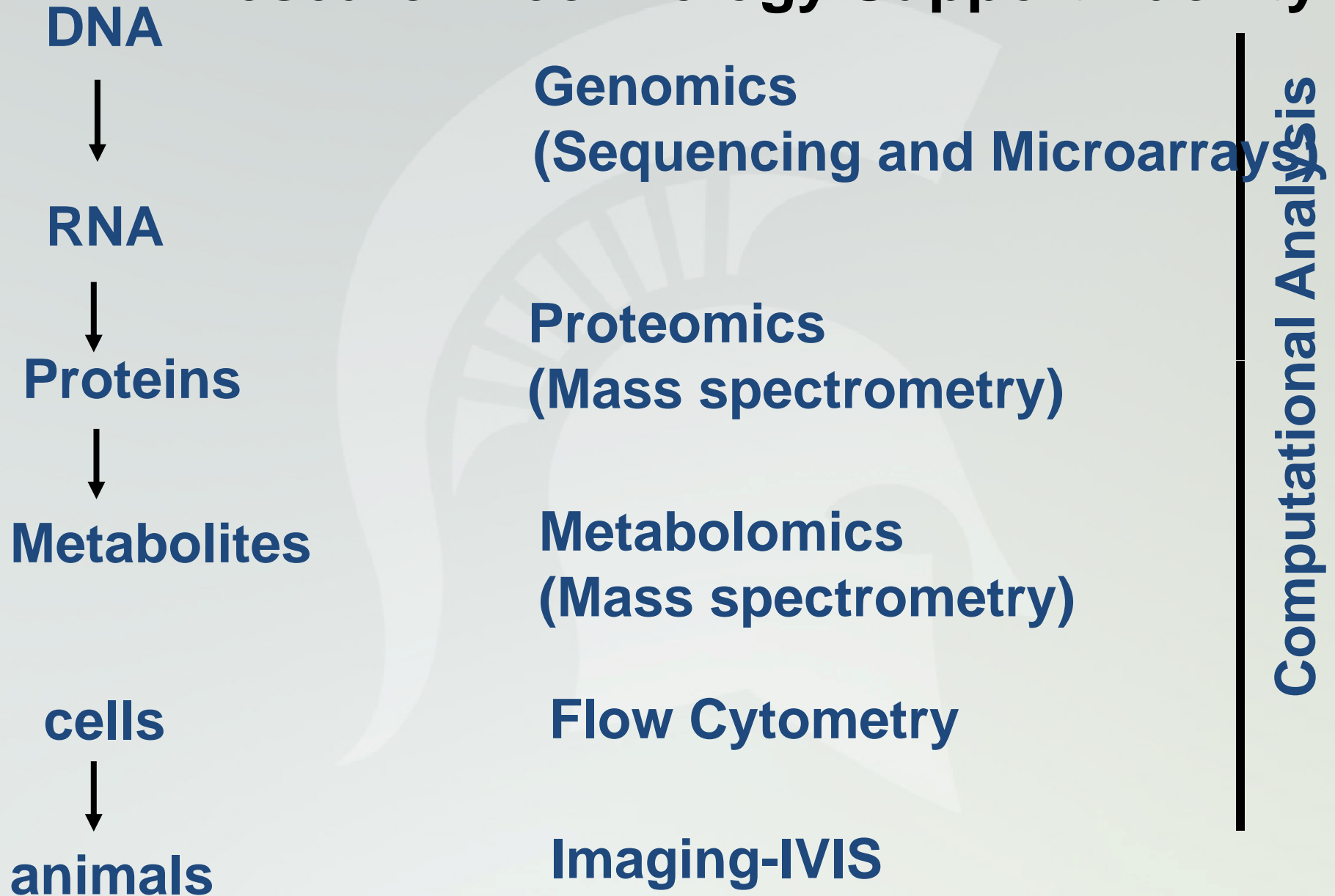
Big Tools for Big Science

FLOW

BIOINFORMATICS
CYTOMETRY
SPECTROMETRY
GENOMICS
IMAGING
MASS
PROTEOMICS

<http://rtsf.msu.edu/index.html>

Research Technology Support Facility

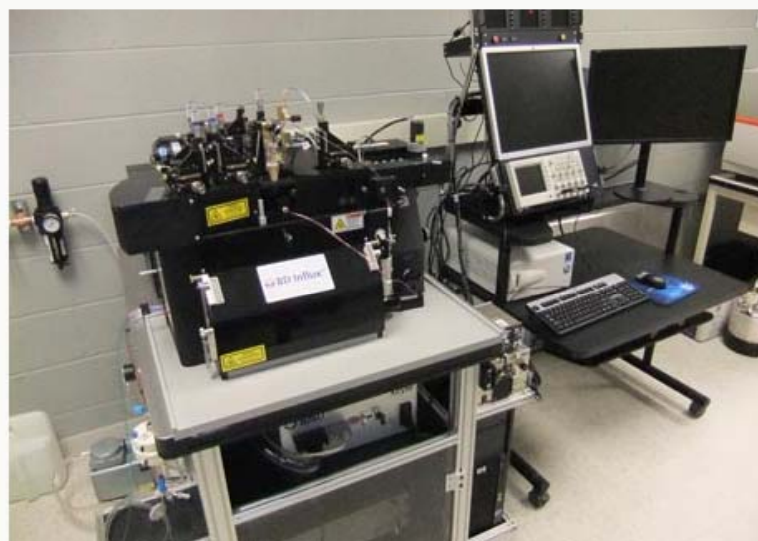




- Home
- About RTSF
- Bioinformatics
- Flow Cytometry
- Genomics
- Imaging-IVIS
- Mass Spectrometry
- Proteomics
- Administration
- Contact Us

Flow Cytometry Core

Flow cytometry is a laser-based technique that analyzes cell populations in suspension. Flow cytometry analyses can simultaneously detect several biochemical parameters at rates up to thousands of cells per second.



Contacts:



Louis King, PhD and
Core Manager
5115 Biomed Phys Sci
Email: kingl@cns.msu.edu
Phone: 517-355-1536
Fax: 517-353-9334

BD Influx sorter
5115 Biomed Phys Sci

LSR II
5115 Biomed Phys Sci

Vantage
417 Biochemistry

<http://rtsftest.bch.msu.edu/flowcytometry.html>

Mass Spectrometry Core

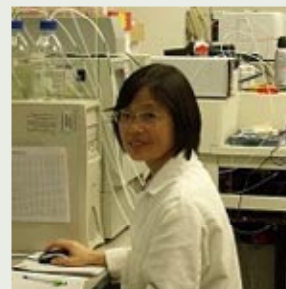
The RTSF Mass Spectrometry Core is an 'open access' resource where MSU researchers and facility staff perform chemical analyses for small molecules and intact macromolecules. The facility features 12 autosampler-equipped mass spectrometers which collectively provide GC-MS, LC-MS/MS, and MALDI-TOF capabilities. Analyses performed here typically involve compound identification, quantitation, and statistical analysis. Facility staff are available to provide expert consultation regarding method development and data interpretation. Students and other researchers are encouraged to become certified users of the instruments; training includes discussions of theory and operation of the facility instrumentation; following training, users are provided 24/7 access to the instruments. Methods currently running include high-throughput profiling of amino acids, phytohormones, signaling oxylipins, structural lipids, and organic acid metabolites. Recently, capabilities for MALDI-TOF tissue and surface imaging have also been developed. The facility performs analyses of samples from more than 100 institutions from across North America.

<http://rtsftest.bch.msu.edu/massspec.html>

Contacts:



Dan Jones, PhD and
Core Manager
jonesar4@msu.edu



Lijun Chen
chenlij1@msu.edu



Scott Smith, PhD

**Mass Spectrometry
Facility**
603 Wilson Rd., Room 11
Biochemistry Building
East Lansing, MI 48824
Phone: 517-353-0612

Proteomics Core

The MSU Proteomics Facility provides resources to assist researchers in the identification and characterization of proteins and peptides. Experiments from simple protein discovery to complex differential proteome profiling and post-translational modification mapping can be performed using our state-of-the art instrumentation and software.

<http://rtsftest.bch.msu.edu/proteomics.html>



Curtis Wilkerson, PhD and
Core Manager
S-124 Plant Biology
517-353-5554
wilker13@msu.edu



Douglas Whitten
5 Biochemistry
517-353-4622
whitten3@msu.edu

[Home](#)[About RTSF](#)[Bioinformatics](#)[Flow Cytometry](#)[Genomics](#)[Imaging-IVIS](#)[Mass Spectrometry](#)[Proteomics](#)[Administration](#)[Contact Us](#)

Big Science Requires Big Tools

The Research Technology Support Facility (RTSF) is a collection of five analytical facilities which provide the fundamental tools for modern life science research.

The complexities and costs of the tools involved in 21st century science require a full-time staff focused on the understanding and maintaining the instruments. These research tools are part of a hub of facilities connecting research in diverse areas of science.

NEWS

Please review the current Employment Opportunities with RTSF.

[Director, Genomics Core](#)

[Assistant Director, Mass Spectrometry Core](#)

<http://rtsf.msu.edu/index.html>

Computational Resources @ MSU

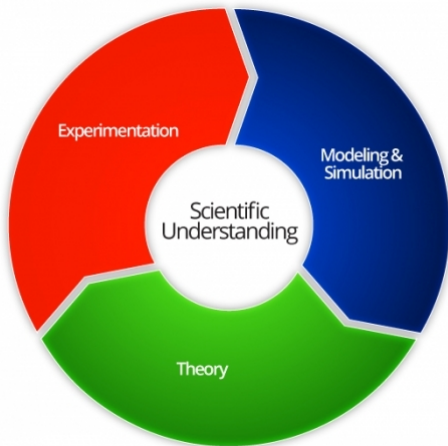
Benjamin Ong
ongbw@msu.edu

Institute for Cyber-Enabled Research
Michigan State University
—
Biomedical and Physical Science Building
Room 1440

January 16, 2014

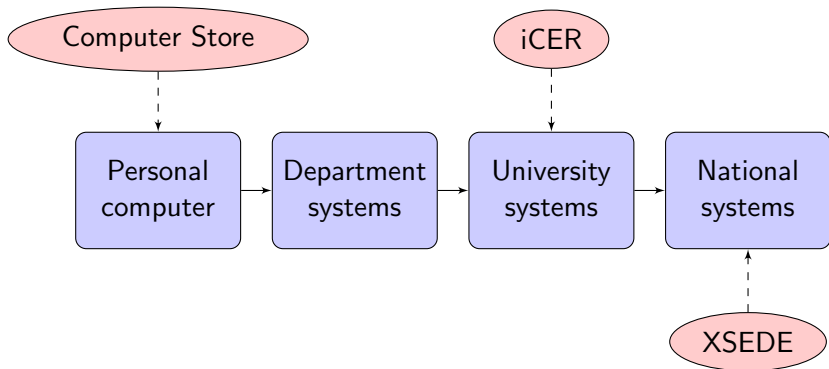


Three Pillars of Science



source: <http://energy.gov>





Goal of iCER

- ~~KFlops/second: how fast can we compute something~~
- KScience/second: how much interesting science can we do, i.e. how quickly can you publish your paper/graduate



iCER is funded by the VPRGS (Vice President for Research & Graduate Studies) Office + some MSU Colleges

This allows us to provide to the MSU community (for free):

- Access to high performance cyber-infrastructure, advanced compute and storage hardware.
- Access to hundreds of installed and configured software titles/libraries.
- Training to use the super-computer: Training workshops; one-on-one consulting for computational research.



Hailey Mooney

Data Management

<http://www.lib.msu.edu/about/diginfo/ldmp/>

Also be sure to attend the workshop on
Thurs. April 17, “Data Management Plans
and Preservation Issues” from 3-5pm in the
Library North Conference Room, 4th floor



This and other research-related presentations available at...

<http://resfacil.msu.edu/presentations>



Questions?

Email Research@msu.edu

